



Summer Term 2010 **Newsletter** Issue 1

Welcome to the first White Lodge Museum newsletter. White Lodge Museum recently celebrated its first anniversary, after a very busy and exciting first year. Following an official opening on 25 February 2009 by The Lady Sarah Chatto, we have welcomed over 3000 visitors to White Lodge Museum, just a few of whom are pictured on this page. Our programme of temporary exhibitions ensures there is always something new to see—over the past year we have exhibited such artefacts as Margot Fonteyn’s make-up box, the tutu worn by Merle Park as Titania in *The Dream*, and two original costumes from Diaghilev’s Ballets Russes productions of *The Firebird* and *Thamar*. Enthusiasts of ballet, history or architecture will all enjoy a visit to the unique White Lodge Museum, and we look forward to welcoming you soon.



Photo: Patrick Baldwin

Former Royal Ballet School student Darcey Bussell at White Lodge Museum



Photo: Clare Quamina

Ethan Stiefel & Gillian Murphy of American Ballet Theatre at White Lodge Museum

We hope you enjoy this newsletter. We plan to issue one each term. If you know someone who would like to be added to our mailing list, or you would like to be removed from our mailing list, please contact us on the details overleaf.

Photo: Patrick Baldwin



Royal Ballet Principal Tamara Rojo joins Royal Ballet School students for the opening of White Lodge Museum

Photo: Marius Arnold-Clarke



Dame Beryl Grey visits White Lodge Museum

Photo: Brian Slater



Students of Capital City Academy with the pointe shoe exhibit at White Lodge Museum

Cataloguing of The Royal Ballet School Collections

We are delighted to have recently been awarded a major grant by the Foyle Foundation towards the cataloguing of The Royal Ballet School Collections. This has allowed us to employ two temporary cataloguers who are working hard at identifying and categorising archive material, recording the information on a database, and storing the material according to archival standards. The cataloguing process will allow greater accessibility to the Collections, and ensure that this internationally significant material is preserved for future generations.

Photo: Marius Arnold-Clarke



Ninette de Valois: Adventurous Traditionalist Conference April 2011

The Royal Ballet School is to host a Conference to mark the 10th anniversary of the death of the Founder of The Royal Ballet School and Companies, Dame Ninette de Valois OM, CH, DBE (1898 – 2001).

A major exhibition, *Invitation to the Ballet: Ninette de Valois and the story of The Royal Ballet*, will be mounted by the Royal Opera House Collections to coincide with the Conference. The exhibition will be displayed throughout the Royal Opera House, and will include a range of material loaned from The Royal Ballet School Collections, White Lodge Museum.

For further information, or to book for the Conference, go to: www.royalballetschool.co.uk/dvconference

New display for 20th anniversary of Birmingham Royal Ballet

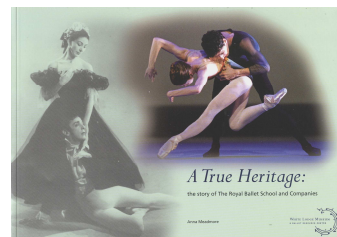
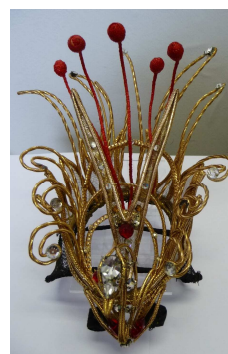
White Lodge Museum is celebrating 20 years of Birmingham Royal Ballet with a special temporary display. It features the wonderful 'Sugar Rum Cherry' costume designed by Jasper Conran and worn by Monica Zamora in the world premiere of David Bintley's popular and acclaimed *The Nutcracker Sweeties* (1996).

Collections news

A headdress worn by Margot Fonteyn in the 1956

production of Frederick Ashton's *La Péri* has been loaned by The Royal Ballet School Collections to Sprueth Magers London, as part of an exhibition inspired by ballet,

featuring the work of American artists Joseph Cornell and Karen Kilimnik. Entry is free, and the exhibition runs until 27 August 2010. www.spruethmagers.com



Now available at White Lodge Museum, our new colour publication, containing over 130 archival images: *A True Heritage: the story of The Royal Ballet School & Companies* by Anna Meadmore, Curator of White Lodge Museum.

Visits to White Lodge Museum and Ballet Resource Centre are FREE

White Lodge is a working school therefore all visits must be booked in advance.

To book please visit: www.royalballetschool.co.uk/wl_museum

Email: museum@royalballetschool.co.uk

Phone: 020 8392 8440, option 7