



THE ROYAL BALLET SCHOOL

Annual Report 2007 - 2008





'White Lodge is a place which encourages pride, passion and creativity. The School deserves every encouragement, with the prospect of wonderful new facilities allied to its re-focused teaching curriculum.'

HRH The Prince of Wales, President

'It is the policy of The Royal Ballet School not only to produce dancers of excellence but also dedicated, balanced, well-mannered, thinking individuals who will be an asset to any community and in any environment – not only a joy to watch but a pleasure to know.'

Gailene Stock AM, Director

#### OUR MISSION AND PURPOSE

Our mission is to train and educate outstanding classical ballet dancers for The Royal Ballet, Birmingham Royal Ballet and other top international dance companies, and in doing so to set the standards in dance training, nationally and internationally.

The School offers an eight-year carefully structured dance course, aligned with an extensive academic programme, giving students the best possible education to equip them for a career in the world of dance.

#### OUR GOALS ARE TO:

- Provide, in a caring environment, artistic and academic training of the highest possible calibre, offering all students of the School a positive learning experience which is constantly monitored for potential improvement.
- Achieve recognised accreditation for the vocational curriculum.
- Offer students as many performing opportunities as possible.
- Ensure that the students have close practical and artistic access to The Royal Ballet companies.
- Maintain a high employment rate of graduating dancers, with many being recruited to The Royal Ballet or Birmingham Royal Ballet.
- Expand the international exposure of the students of the School by participating in international competitions and festivals.
- Provide new state-of-the-art, purpose-built facilities which will enhance the teaching and learning opportunities for the students.
- Conduct an extensive Audition and Outreach programme.

Below: A young James Hay with classmate, Lucy Emery. James commenced his formative training at White Lodge in 2000, a firm foundation for his future



## Chairman's Report

In March 2009, the School will have completed an extraordinary 10-year period of creative redevelopment culminating in the 'Reawakening of White Lodge', now a new jewel of a ballet school, set in Richmond Park after £22 million of investment.



David M Norman

This followed the £20 million building of the new Upper School in Floral Street in 2003 including the 'Bridge of Aspiration', linking the School pragmatically and symbolically to the Royal Ballet Company at the Opera House in Covent Garden.

Equally significant, our Director, Gailene Stock, has wrought over the same decade a transformation in the balletic training, embracing a fundamentally revamped curriculum and teaching staff. This has led to a second year running of 100% successful employment for our Graduating Class of 25 students into 15 ballet companies around the world. This is surely formidable testimony to the quality of teaching at the School, alongside the first-class GCSE and A-level BTEC Diploma academic results also achieved.

Significant other developments include:

- The vibrant and vital Partnership and Access Programme with the Department for Children, Schools and Families (DCSF), now expanded to 30 Secondary and Primary Schools and impacting over 1,200 students annually through teaching, seminars and joint performances.
- Our new White Lodge Ballet Museum which opened in February 2009 - providing a unique and fascinating, interactive exposition of the development of ballet from 1730 in France to the 21st Century in Britain, initiated by the inspired leadership of Dame Ninette de Valois in 1926, who then moved the School to White Lodge in 1955. A vibrant School has emerged from an 18th Century Palladian royal hunting lodge. A constructive transformation!

- The School achieved a satisfactory operating surplus of £189,000 in the year to 30 August 2008; the White Lodge project has also been delivered right on budget and on time. The School's operational finances are on a sound footing, but remain under pressure given rising costs and the desire to provide scholarships to those talented students (national and international) who require them. There also remains over £2 million of funding to be raised to achieve our requirement of £22 million for the White Lodge Redevelopment. We have plans to achieve this during the coming year, despite the current stringent economic and benefactor circumstances. The balance sheet net assets of the School now stand at £31 million.

- The School has finally acquired a 35-year lease on a first-class residential hall, for 40 of our Upper School students, in Mercer Street - three minutes' walk from the School in Floral Street. We will spend £1 million on refurbishment there and at Wolf House for occupation in September 2009.

### OUR MISSION

The School continues in its determination to find, attract, develop and train the most exceptional dancers, British and international, whilst strengthening our partnership with the Royal Ballet Company, Birmingham Royal Ballet and the DCSF.

Taken overall, it is wholly encouraging that The Royal Ballet School has emerged as a quite outstanding British School, recognised to be right at the forefront of its vocational profession internationally. It has become a national and international resource serving over 2,000 full-time, Associate, Summer School and Secondary/Primary School Students of whom approximately 300 are from overseas.

The students enjoy and respect an exceptional training and learning experience - "It is the best" as was declared two years ago by our student and star graduate from the Ukraine, Sergei Polunin - now already a Soloist with The Royal Ballet Company after spending four years of training with us from the age of 13 at both the Lower and Upper School.

Lauren Cuthbertson, an English dancer of striking potential, has done likewise, emerging, aged 24, as Principal of The Royal Ballet. Equally, Jenna Roberts, Joseph Caley, Alexander Campbell and Delia Mathews, our recent Graduates, seem destined for similar acclaim at Birmingham Royal Ballet.

These achievements of the School are a tribute to the Director, her Staff and our Board of Governors, who have made exceptional contributions in time and expertise (building, financial, funding and vocational) over the past ten years. I salute each one of them, appreciatively and proudly; Gailene Stock, Jay Jolley, Charles Parker, Ricki Gail Conway, Patrick Maxwell, Felicity Clark and Nicolas Chisholm deserve our special thanks.

I will now take my leave from the Chairmanship of the School in August 2009, after 10 years as Chairman and 30 years as a Governor (definitively contrary to current Corporate Governance practice and guidelines), confident and inspired as to its future as a world leader and its ability to transcend the inevitable challenges.

A handwritten signature in blue ink that reads "David Norman". The signature is fluid and cursive, with a long horizontal line extending to the right.

David M Norman  
Chairman  
March 2009



Phase 1



Phase 2



Phase 3





## Resplendent White Lodge

A stunning three-year, three-phase redevelopment comes to fruition

Phase 1: Completed September 2006  
Extension of the Pavlova Studio; three new residential halls; staff flats; Principal's house; and improvement to landscaping

Phase 2: Completed December 2007  
New dining hall, kitchen and courtyard; modernization to 18th Century listed buildings; and the new Peter Harrison Library

Phase 3: Completed March 2009  
Two new aesthetically perfect dance studios; and The Royal Ballet School Specialist Collections and Permanent Ballet Museum, providing increased access to the general public and students



All photos: B&K Architects, or as credited



Patrick Rowlin



Brian Slater



Marius Arnold-Clarke

A 100% Royal Ballet School success story, James Hay, *Outstanding Graduate of the Year*. Joined The Royal Ballet in August 2008



Quality teaching time with  
Director of The Royal Ballet  
School, Gailene Stock





## Director's Report

It is a reflection of the School's unstinting hard work, commitment and pursuit of excellence that our Graduates have achieved a 100% employment rate for the second year running – no mean feat in these competitive times.

Two male dancers were taken into The Royal Ballet: Dawid Trzensimiech, who came to the Upper School following the Prix de Lausanne, and James Hay, who completed his entire training at The Royal Ballet School.

Showing such promise as an 8-year-old Junior Associate, it was no surprise that James progressed to the Lower School, then to Upper School, winning the 2006 Young British Dancer of the Year Award and a Prix de Lausanne along the way. Taking up his professional contract with The Royal Ballet completes the circle – a fitting reward for James' talent and hard work and most gratifying for everyone involved in his 11 years of training.

Three very talented ladies were offered contracts with Birmingham Royal Ballet – Dusty Button, Delia Mathews and Nicki Moffatt – all of whom have collected many international awards throughout their training. One can see from the full list of national and international contracts detailed on page 27 that the School's 'net' stretches far and wide indeed. We are very proud of all the Graduates and wish them every success as they venture into their professional lives.

Students were regularly involved throughout the year in performances by The Royal Ballet and Birmingham Royal Ballet. We welcome the fact that the ballet masters and/or mistresses of our two Royal companies frequently visit the School to rehearse the students for their productions. This proves to be invaluable in familiarising the students with the works prior to rehearsals and appearing on stage with the professional companies.

International performances took place this year in Dresden, California, Palermo and Washington, all most successfully. It was a great pleasure to be invited again by Michael Kaiser, Chief Executive Officer of the John F Kennedy Center for the Performing Arts in Washington, to participate in their *Protégés II* programme. We performed David Bintley's beautiful work *Galanteries* to great acclaim, alongside the Bolshoi Ballet School, the School of American Ballet and the Paris Opera Ballet School – quite an impressive line-up of dance training institutions!

Our strong focus on choreography at both the Lower and Upper Schools continues, as we believe this is such an important part of the future development

of classical ballet as an art form. The Kenneth MacMillan, Ninette de Valois and Ursula Moreton Choreographic Awards demonstrated once again how the present generation of dancers have embraced this aspect of their training, never ceasing to surprise us with their increasingly sophisticated choice of music and use of dancers.

Success was resounding at the 2008 Youth America Grand Prix Award in New York when 2nd Year students Vadim Muntagirov and Benjamin Ella won the Gold and Silver medals respectively. Back on UK shores, Lucas Lima (2nd Year) was presented with the Lynn Seymour Award for Expressive Dance (judged by Dame Monica Mason DBE and Nina Finburgh, who kindly donates the prize).

The 2008 Young British Dancer of the Year Award, generously sponsored by Ricki Gail Conway, was another chance for students to display their potential with William Bracewell (1st Year) announced as the well-deserved winner. Lower School students Sean Bates and Brandon Lawrence (Year 11) were also among the prizewinners; Sean winning the Sibley Dowell Award for Potential and Brandon a commendation. Continuing their fine form, they were joint winners of the Phyllis Bedells Award, presented by the Royal Academy of Dance, with Brandon also winning the 2008 Dance Critics' Circle 'Working Title Billy Elliot Award'.

Our end-of-year performances at the Royal Opera House were very well attended and warmly applauded. Performances at the Linbury Studio Theatre included a variety of heritage and contemporary works to demonstrate the students' virtuosity, which was also amply on display at the Royal Opera House main stage matinee performance.

Wayne McGregor's specially commissioned *i-relations* stretched the 2nd Year students' artistic and physical capabilities to the limit. Juxtaposed with the Bournonville finesse of Johan Kobborg's *Napoli Divertissements*, the classical elegance of David Bintley's *Galanteries*, the drama of *The Unwritten* by Natalie Weir and the youthful exuberance of Louise Bennett's *Concerto in Red*, the breadth of the students' interpretative and technical skills was abundantly clear.

The Upper School Graduation Ceremony directly followed the matinee performance, where awards were

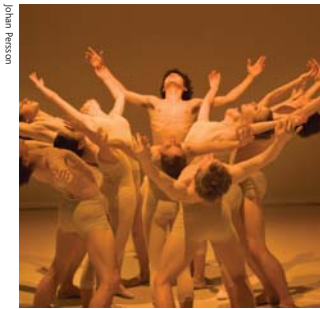


Top: Roseanna Leney and Brandon Lawrence (both Year 11) shine in Louise Bennett's *Concerto in Red*

Above: Poise personified – Ichigo Oguro, Benjamin Ella and Shiori Kase in *Napoli Divertissements*

John Press

John Press



Top: *Quand Les Ames Se Touchent* by Chehon Wespi-Tschopp – winner, Ursula Moreton Award

Above: Delia Mathews and Jaered Glavin in *Strength and Grace* by Andrew Peasgood. Delia shared the *Outstanding Graduate of the Year Award* with James Hay

presented to many commendable students. Most notably, the *Dame Ninette de Valois Award for Most Outstanding Graduate* was jointly awarded to James Hay and Delia Mathews, both so deserving of this accolade.

The performance year concluded with eight Graduates participating in *Excellent!*, a special showcase held at Sadler's Wells Theatre on 16 July to celebrate the Government's Music and Dance Scheme. Through the Department for Children, Schools and Families (DCSF), this scheme funds the students who attend The Royal Ballet School and has assisted in a major way in the redevelopment of White Lodge, as well as many other projects. We are greatly indebted to the DCSF for its ongoing assistance in nurturing the balletic stars of tomorrow.

The School's academic programme continues to produce very pleasing results indeed and my thanks go to Martin Fosten and Pippa Hogg for their excellent work and support of the students on all levels. My sincere thanks also to Diane van Schoor and Hope Keelan for their hard work and dedication to the balletic training and welfare of the Lower School students.

The Outreach Programme has been as busy as ever. The national audition tour took place in the early part of the year, with international auditions also being held in Japan, Paris and Italy. A record number of students were invited to join the School and we have high hopes that they will all fulfil their obvious promise.

Potential was also on display at the highly successful International Summer School, with several students accepting offers for our full-time courses. My sincere thanks to Kathryn Wade and her very willing team in the Outreach Department for ensuring that the Associate Programme, auditions, Teacher Link and Summer School are all such a success.

The Dance Partnership and Access Programme continues to flourish under the directorship of Jay Jolley. Having introduced dance, movement and the work of The Royal Ballet School to state sector secondary and primary schools across the country, this vibrant programme continues to be an important and rewarding initiative for the School.

The Professional Dancers Teachers' Course continues to attract quality applicants, with Diplomas

presented in 2007 - 08 to six professional dancers associated with companies including The Royal Ballet, Birmingham Royal Ballet and English National Ballet. We feel confident that these newly qualified teachers will go on to make a strong contribution to dance training in the United Kingdom and abroad.

As our Redevelopment Project at White Lodge nears completion, I record my genuine thanks to all those who have been involved – either in a practical way, by supporting it financially, or in seeking those who will support it financially! Special thanks are particularly due to the architects Barnsley, Hewett and Mallinson, and to our Governor, Charles Parker, who has chaired the Development Committee so brilliantly. The redevelopment has made a world of difference to all those who live and work at White Lodge and is something we can all be proud of for many, many years to come.

My sincere thanks must also go to our untiring Chairman, David Norman, for his amazing commitment and achievements over the past decade, along with the dedicated team of Governors who go far beyond their normal duties and responsibilities in their interest in and support of the School. Finally, my heartfelt thanks to the wonderful team of artistic, academic, administrative and pastoral staff who are united in their love of the School and students and whose ultimate goal is to make the dreams of these young people come true.

Our plans for the coming months and years ahead include strengthening our collaboration with The Royal Ballet and Birmingham Royal Ballet, reviewing our System of Training in relation to the current demands placed upon professional dancers, and further incorporation of performance psychology into our curriculum. Expanding the Guest Teacher programme is another priority, as is our student and teacher exchanges with top quality international schools. We also intend to continue to set the standard of excellence, nationally and internationally, for classical dance training.

**Gailene Stock AM**  
Director

Victor Zarallo Munoz scales dramatic heights above Andrew Peasgood in Natalie Weir's haunting work, *The Unwritten*



A picture of concentration:  
Junior Associates are fully  
focused in class with teacher,  
Tania Fairbairn



## Outreach Programme

A full and vibrant year saw our Associates perform regularly with The Royal Ballet, applications increase for all courses, and eminent guest teachers Gary Avis, Viviana Durante and Francesca Zumbo teach truly inspiring classes.

### ASSOCIATES PROGRAMME

The highlight of the Junior Associates' year was the invitation to perform as mice in The Royal Ballet's *Tales of Beatrix Potter*. The rehearsals proved very rewarding for the 20 young dancers, especially as they were working with The Royal Ballet dancers and Sir Anthony Dowell. It was a bonus that the BBC televised their performance from the Royal Opera House at New Year.

Further appearances in The Royal Ballet's productions of *Romeo and Juliet* and *The Dream* kept Sylvia Hubbard, Associates Coordinator, and her chaperone team more than occupied. At *Move It* held at Olympia and the ISTD Congress, Junior Associates also received compliments for their performances of dances arranged by Associates' teacher Nicola Gaines.

The Junior Associates (JAs) are regarded as the 'base' of The Royal Ballet School's 'pyramid', with many dancers and choreographers of The Royal Ballet and Birmingham Royal Ballet having commenced their training as JAs. The classes nurture and encourage talented young dancers from the age of eight years and the Associate Teachers, working at our seven centres across the UK, are wonderfully supported by the children's regular ballet teachers.

### AUDITIONS

Auditions for entry to the School in September 2008, as well as for the Mid and Senior Associates, were held in London, Birmingham, Bristol, Leeds and Manchester. Successful auditions were also held in Japan, Paris and Livorno, enabling candidates from these countries to audition for the School without the expense of travelling to London.

An estimated 1,000 candidates are seen in person at the preliminary auditions plus many video submissions sent from abroad, from which successful applicants are invited to attend our final auditions.

In general, the majority of Year 7 entrants to Lower School are JAs, having significantly benefitted from their introduction to the School's System of Training. Dancers at such a tender age develop their technical skills at different rates and those not selected to enter White Lodge frequently continue to become Mid or Senior Associates.

There are many different levels of entry to the School and, once having identified the talented children, we continue to encourage them to remain within The Royal Ballet School 'family'.

### INTERNATIONAL SUMMER SCHOOLS 2008

The White Lodge and Covent Garden Summer Schools were both outstandingly successful in 2008.

The White Lodge timetable, devised by Diane van Schoor, explored the individual younger dancers' potential, encouraging each of them to express their creative, musical and technical skills. Classes for students between 10 and 14 years were taught by The Royal Ballet School artistic faculty, joined by Kenneth Tharp.

Roland Thompson and Summer School Coordinator, Shona Devine led the Pastoral Teams, and Carol Pakri and Alex Leonard led two evenings of American Line Dancing, a great opportunity for everyone to integrate and enjoy being together.

The Covent Garden Summer School is a two-week progressive course for students aged between 15 and 18 years who have the advantage of working with Director Gailene Stock and Assistant Director Jay Jolley, supported by The Royal Ballet School's teaching faculty. Students also have the opportunity to work with our eminent Guest Teachers, who this year included ballerinas Viviana Durante and Marion Tait, Mikaela Polley from Rambert Dance Company for contemporary dance, and Jane Burn for Body Conditioning – all Graduates of the School.

The quality of the applicants was reflected in Gailene Stock's invitation to eight talented students to join the Upper School from September 2008, six of whom were able to accept. Both the Summer Schools ended on a high note, with impressive demonstrations of the work achieved performed to appreciative audiences of families, teachers and friends.

### SUPER SUNDAYS AND TEACHER LINK EVENTS

Exemplifying the School's open door policy, *Super Sundays* and Teacher Link events are a chance to share the dance expertise of our wonderful guest teachers with students, teachers and parents from other vocational and private ballet schools.



John Pearson



Janet Baldwin

Top: 'There's a mouse in the House!' Junior Associates revel in *Tales of Beatrix Potter* at the Royal Opera House

Above: Foot work and team work – all part of the mix at Associate class



Patrick Baldwin

Above: Learning by example - Lower School student Jacopo Bellussi in classical class with the inspirational Gary Avis

Below: High standards and high spirits at the Covent Garden International Summer School

It was a privilege to have Gary Avis, Principal Character Artist and Assistant Ballet Master of The Royal Ballet, visit in April 2008. His understanding of the students' desire to acquit themselves to their best potential was obvious to all, with his empathy and gentle humour giving the dancers great confidence.

The coaching and technique classes with all the guest teachers, especially Francesca Zumbo, former Paris Opéra Etoile and now a distinguished teacher at l'Ecole du Ballet de l'Opéra de Paris, are as much a joy to observe as they are for the participants.

One aspect of vocational training which always attracts great discussion is the commencement of pointe work. Diane van Schoor taught an inspiring and enlightening class to some of her White Lodge pupils, followed by a class for young dancers from other schools.

The Outreach Programme's Teacher Link events are developing into a high profile part of its activities.

Two *Be a JA for a Day* events, for young pupils interested in becoming Junior Associates, were held in London and at the Birmingham Hippodrome, home of Birmingham Royal Ballet. Both were led by Associates Coordinator Sylvia Hubbard and Physiotherapist Janet Briggs with teacher Tania Fairbairn and pianists.

The *Audition Insight Days* are also happy occasions with many parents commenting on how 'friendly' the audition process is and how much advice is given. Everyone leaves us promising to return completed application forms for the following year!

The work of the Outreach Programme is extensive and intensive and my sincere thanks must go to the enthusiastic and committed teams at Floral Street and our Centres across the UK who continue to make the department such a success.

**Kathryn Wade**

Principal – Outreach Programme



Patrick Baldwin

## Audition Analysis (2007 – 2008)

For entry September 2008

### APPLICATION FORM ANALYSIS 2008

#### Summer School 2008

|              | Applied     | Accepted   | Girls      | Boys      |
|--------------|-------------|------------|------------|-----------|
| Junior       | 911         | 260        | 206        | 54        |
| Senior       | 385         | 128        | 99         | 29        |
| <b>Total</b> | <b>1296</b> | <b>388</b> | <b>305</b> | <b>83</b> |

#### Lower School, Upper School & Associates for entry in September 2008

|                   | Girls | Boys | Total |
|-------------------|-------|------|-------|
| Lower School      | 334   | 74   | 408   |
| Upper School      | 186   | 51   | 237   |
| Junior Associates | 832   | 150  | 982   |
| Mid Associates    | 388   | 79   | 467   |
| Senior Associates | 147   | 18   | 165   |

### AUDITION NUMBERS BY VENUE

#### Mid & Senior Associates, Lower School & Upper School

|              | Girls      | Boys       | No. of Candidates | %            |
|--------------|------------|------------|-------------------|--------------|
| London       | 342        | 85         | 427               | 45.1         |
| Birmingham   | 119        | 20         | 139               | 14.7         |
| Leeds        | 121        | 20         | 141               | 14.9         |
| Manchester   | 78         | 9          | 87                | 9.2          |
| Bristol      | 72         | 11         | 83                | 8.8          |
| Video        | 5          | 1          | 6                 | 0.6          |
| Private      | 51         | 12         | 63                | 6.7          |
| <b>Total</b> | <b>788</b> | <b>158</b> | <b>946</b>        | <b>100.0</b> |

#### Overseas for Upper School

|         | Number of Candidates |
|---------|----------------------|
| Livorno | 72                   |

#### Junior Associate Auditions 2008

| Centre       | No. of Candidates | Girls      | Girl Intake | Boys       | Boy Intake |
|--------------|-------------------|------------|-------------|------------|------------|
| London       | 389               | 307        | 26          | 82         | 19         |
| Birmingham   | 167               | 144        | 12          | 23         | 10         |
| Bristol      | 71                | 66         | 12          | 5          | 2          |
| Eastleigh    | 70                | 57         | 5           | 13         | 6          |
| Exeter       | 45                | 39         | 6           | 6          | 4          |
| Leeds        | 117               | 106        | 13          | 11         | 5          |
| Manchester   | 123               | 113        | 11          | 10         | 2          |
| <b>Total</b> | <b>982</b>        | <b>832</b> | <b>85</b>   | <b>150</b> | <b>48</b>  |

### SUMMARY

|   |      |
|---|------|
| Total number of applications (Lower, Upper School & Associates) | 2331 |
| Total audition candidates                                       | 2000 |
| Number of students applying for more than one course            | 276  |

## Student Numbers (2007 – 2008)

### CURRENT STUDENT NUMBERS

| Lower School | Girls     | Boys      | Total      |
|--------------|-----------|-----------|------------|
| Year 7       | 13        | 12        | 25         |
| Year 8       | 12        | 13        | 25         |
| Year 9       | 9         | 12        | 21         |
| Year 10      | 14        | 12        | 26         |
| Year 11      | 15        | 12        | 27         |
| <b>Total</b> | <b>63</b> | <b>61</b> | <b>124</b> |

| Upper School | Girls     | Boys      | Total     |
|--------------|-----------|-----------|-----------|
| 1st Year     | 16        | 13        | 29        |
| 2nd Year     | 12        | 15        | 27        |
| 3rd Year     | 13        | 14        | 27        |
| <b>Total</b> | <b>41</b> | <b>42</b> | <b>83</b> |

#### Foreign Students

|            |   |               |           |
|------------|---|---------------|-----------|
| American   | 3 | New Zealander | 2         |
| Australian | 8 | Norwegian     | 1         |
| Belgian    | 1 | Polish        | 1         |
| Brazilian  | 2 | Russian       | 1         |
| French     | 8 | Spanish       | 2         |
| Italian    | 5 | Swedish       | 1         |
| Japanese   | 6 | Swiss         | 1         |
|            |   | <b>Total</b>  | <b>44</b> |

| Senior Associates | Girls     | Boys      | Total     |
|-------------------|-----------|-----------|-----------|
| London            | 38        | 13        | 51        |
| Birmingham        | 21        | 0         | 21        |
| <b>Total</b>      | <b>59</b> | <b>13</b> | <b>72</b> |

| Mid Associates        | Girls      | Boys      | Total      |
|-----------------------|------------|-----------|------------|
| London Weekly         | 40         | 17        | 57         |
| Birmingham Weekly     | 30         | 8         | 38         |
| Bristol Fortnightly   | 36         | 9         | 45         |
| Eastleigh Fortnightly | 15         | 3         | 18         |
| Leeds Weekly          | 25         | 6         | 31         |
| <b>Total</b>          | <b>146</b> | <b>43</b> | <b>189</b> |

| Junior Associates      | Girls      | Boys      | Total      |
|------------------------|------------|-----------|------------|
| London Weekly          | 38         | 20        | 58         |
| London Fortnightly     | 26         | 12        | 38         |
| Birmingham Weekly      | 30         | 8         | 38         |
| Birmingham Fortnightly | 15         | 2         | 17         |
| Bristol Fortnightly    | 27         | 7         | 34         |
| Eastleigh Fortnightly  | 13         | 6         | 19         |
| Exeter Fortnightly     | 18         | 1         | 19         |
| Leeds Weekly           | 20         | 9         | 29         |
| Manchester Monthly     | 25         | 11        | 36         |
| <b>Total</b>           | <b>212</b> | <b>76</b> | <b>288</b> |

## Partnership and Access Programme

Over 1,200 young people in 30 schools across England have been introduced to ballet and the work of the School through aDvANCE and primarySTEPS, two major initiatives of the Dance Partnership and Access Programme.



Top: Big steps for primarySTEPS – Level 2 Dagenham pupils in *The Selfish Giant*, performed to a captivated audience at the Royal Opera House

Above: Bravo! The 150 students from 11 schools received rapturous applause at curtain call

With the first 3-year National Partnership Scheme and a second primarySTEPS centre being established this year, the programme goes from strength to strength.

### ROYAL OPERA HOUSE SHOWCASE

In recognition of our expanding projects, this year's activities culminated in a vibrant performance at the Linbury Studio Theatre, Royal Opera House, Covent Garden on 28 June. It provided a rare opportunity to present collectively various works from aDvANCE London and aDvANCE National (both secondary school programmes) and primarySTEPS (developed for primary school pupils). Seeing 150 young performers take to the stage from 11 schools across the UK, ranging from 8 -18 years, was most gratifying for all who took part.

**'It was clear from the outstanding performance and the enjoyment and enthusiasm shown by our young people that their involvement with The Royal Ballet School has had a positive impact.'**

Vanessa Wiseman, Headteacher, Langdon School

### ADVANCE LONDON

During Autumn 2007, 1st Year students from The Royal Ballet Upper School worked with Hornsey School for Girls. This multi-cultural comprehensive school is situated in the London Borough of Haringey.

Led by Bim Malcomson and assisted by David Fielding, this aDvANCE 1 project comprised weekly choreographic workshops for the students. Over several months, dance material was drawn together to create a final choreography which was performed alongside our 1st Year BTEC appraisal at Upper School on 7 and 8 February 2008. The work *Chaconne*, a 16-minute piece for 45 young people set to Bach's *Violin Partita in D Minor*, explored counterbalance, opposition and a sense of trust.

The second collaboration, aDvANCE 2, commenced in January 2008 between students from The Royal Ballet Lower School, Langdon School and Lister Community School, both based in East London.

Langdon School, situated in the London Borough of Newham, is an inclusive co-educational comprehensive with over 1,800 students aged between 11 and 16 years. Serving a diverse

community in an area of economic and social deprivation, this school has 81% of its students from ethnic minorities, 12% from a refugee background, with over 50 languages being spoken. Langdon School became a Specialist Sports College in 1998 and was re-designated as such for a further five years from 2001.

Lister Community School, based in Plaistow, is a mixed secondary school of 1,334 students aged between 11 and 16 years. English is a second language for 75% of the students, with many different ethnic communities represented. The school has Sports Mark Gold and Arts Mark Gold status.

The aDvANCE 2 project was led by David Fielding, assisted by Bim Malcomson, and culminated in an exuberant joint dance piece *A History of Ballet in Sixteen Minutes and Forty Seconds* set to Britten's *Young Person's Guide to the Orchestra*. This was performed on 9 and 10 May at The Royal Ballet Lower School and at Stratford Circus, East London.

### ADVANCE NATIONAL

Working closely with the Department for Children, Schools and Families (formerly Department for Education and Skills) and the Specialist Schools and Academies Trust, we were asked to create longer term relationships with schools and their communities outside of London. This has resulted in the development of a national 3-year programme, launched in Blackpool in Autumn 2007.

Our work in the Northwest centres around Bispham High School and Arts College, a secondary school situated in Bispham, Lancashire. With an intake of boys and girls aged 11 - 16 years, the school is a Specialist Performing Arts College and has been recognised as a Centre of Excellence for Performing Arts.

During our first year of partnership, The Royal Ballet School worked with a cluster of secondary schools and further education colleges identified by Bispham High School: Palatine School; Hodgson School; Blackpool and Flyde 6th Form College; and Blackpool 6th Form College. Each school was offered an exciting range of activities designed to introduce their students to ballet and The Royal Ballet School. Participants were then invited to audition for a 'gifted and talented' dance group, established at Bispham High School.



Time well spent: *A History of Ballet in 16 Minutes and 40 Seconds*, performed by Langdon and Lister Schools and Year 10 Lower School students



Enjoyment and enthusiasm are in abundance at the primarySTEPS dance class



'The opportunity for our students to explore ballet in its historical forms and to work alongside highly talented 'professional' peers has, I am clear, been an excellent learning experience, both vocationally and socially.'

Martin Buck, Headteacher, Lister Community School

A second project group was formed with students aged 11 - 14 years from Bispham High School. From November to March both groups met weekly to work with Partnership and Access Dance Artists, Paul Bayes-Kitcher and Rhian Robbins, exploring ballet creatively and making original dance pieces for performance. This resulted in two wonderful pieces, *Promenade* by Rhian Robbins and *Inverse* by Paul Bayes-Kitcher, performed at Bispham High School on 5 March 2008.

The future of the aDvANCE National Programme is bright, with the anticipated launch of the primarySTEPS programme for 'feeder' primary schools and continuing support for the 'gifted and talented' dance programme during its second and third year.

#### PRIMARY STEPS

The primarySTEPS programme, originally established in Dagenahm, East London has now expanded into the Southwest with a centre in Swindon. Two new primarySTEPS groups were introduced at Level 1 in both Dagenham and Swindon, with 600 students taking part.

Aimed at Year 3 children (7 - 8 years), this project has been established to introduce ballet and initial ballet training to children who would not otherwise have the opportunity. Focusing on up to five primary schools in a designated area, each class receives six creative introductory ballet workshops, teachers' session and resource material to support work with the pupils, an invitation to watch Royal Ballet School students in training, and an opportunity for identified pupils to join a regular primarySTEPS dance class.

#### ACCESS PROJECTS

Increased access activities have included two open exhibition days at White Lodge, our Lower School. Both days, held on Exeat weekends in November and January were open to the general public.

In April, we hosted the *Partners in Dance Festival*, bringing together local community dance groups to perform at White Lodge.

Continuing our association with the Department for Children, Schools and Families, we supported two of their current programmes – Centres of Advanced Training (CATS) and Youth Dance England – by providing two workshop days at White Lodge.

The first was held in October, comprising a day of workshops and classes for students from Centres for Advanced Training (Laban Centre, The Place and Swindon Dance). Participants undertook a Pilates session led by Jane Burn, and enjoyed ballet classes and choreographic workshops led by Bim Malcomson and David Fielding.

The second day was conducted in May for two groups from Youth Dance England – Impact Dance and Circus Space. Joined by The Royal Ballet School Senior Associates, the day consisted of three masterclasses where students had the opportunity to experience each others' disciplines. A creative session concluded the workshop when students drew together their experiences of the day.

We forge ahead on the teaching front with the development phase of our Course in Ballet Education (in conjunction with ROH Education Department) now complete. Six students commenced the teaching course in October 2008, heralding an important phase in the programme's progress.

Finally, the White Lodge Ballet Museum opened its doors in February 2009. As the first museum dedicated to ballet in the UK, it shares the rich history of White Lodge, a Grade 1 listed building and former royal residence, the history of ballet as an art form, and the illustrious history of The Royal Ballet School itself.

Overall, it has been a most productive, busy and exciting year. The Dance Partnership and Access Programme continues to flourish, thanks to the ongoing support of the Department for Children, Schools and Families and the unstinting hard work and enthusiasm of the dedicated staff – both at The Royal Ballet School and at all of our participating schools.

Jay Jolley  
Assistant Director



Rhian Slater



Rhian Slater

Top: Learning curves – primarySTEPS pupils join in a ballet demonstration held in Swindon

Above: Students from The Royal Ballet School share their knowledge and skills with the Swindon audience

## Academic Report

Some excellent results were gained by students at both the Lower and Upper Schools in 2008. The GCSE A\* - C pass rate reached a 7-year high at 96.5%, rising from 87.5% in 2007.

There will be no tears shed for the Key Stage 3 SATs examinations which have now been abolished following a summer of chaos in the administration and marking procedures. The Lower School had already ceased taking them in Science, and in Mathematics and English the benefits were finally eroded by unpredictable marking and delayed results.

At Upper School, 70% of the A-level examinations were passed with an A or B grade and there was a 100% pass rate in the BTEC National Awards in Dance and Arts Management. Although the number of A and AS levels taken has fallen, reflecting the increasing number of overseas students, we remain committed to the highest quality of teaching across a narrow range of subjects.

We aim to provide those students who have the ability, with the opportunity to gain at least one academic and two vocational qualifications. Once again this policy benefitted one of our students who, although unable to continue her training in dance, was able to take up a university place to study primary education.

Although results continue to improve, the constraints in preparing for the examinations become ever more complex. This year the examination period was brought forward by one week resulting in most examinations taking place before rather than after the half term break, thereby denying our students the only period available for serious revision free of dance commitments.

Another difficulty unique to students of The Royal Ballet School was illustrated by one of our Upper School students whose preparation on the morning of his Mathematics A-level examination coincided with his equally important Pas de Deux classical appraisal. Following a lightning quick change and a taxi ride to Richmond, he made it to White Lodge just in time to sit his afternoon Mathematic papers.

Under such circumstances we must congratulate our students and teachers on another set of outstanding results.

**Martin Fosten**  
Academic and Pastoral Principal

The triumphant *Grand Défilé* –  
Royal Opera House matinee 2008



# Academic Examination Results 2008

## KEY STAGE 3 TESTS LOWER SCHOOL YEAR 9

| Level        | English   | Maths     |
|--------------|-----------|-----------|
| 3 and below  | 0         | 0         |
| 4            | 2         | 1         |
| 5            | 8         | 2         |
| 6            | 7         | 9         |
| 7            | 4         | 7         |
| 8            | 0         | 2         |
| <b>Total</b> | <b>21</b> | <b>21</b> |

| GCSE                         | A*        | A         | B         | C         | D        | E        | Entries    | Passes     | % Pass    | A*-C |      |
|------------------------------|-----------|-----------|-----------|-----------|----------|----------|------------|------------|-----------|------|------|
|                              |           |           |           |           |          |          |            |            |           | A*-C | Rate |
| Art                          | 3         | 5         | 6         | -         | -        | -        | 14         | 14         | 100       |      |      |
| English                      | -         | 10        | 9         | 7         | 1        | -        | 27         | 26         | 96        |      |      |
| English Lit.                 | -         | 5         | 1         | 1         | -        | -        | 7          | 7          | 100       |      |      |
| Expressive Arts              | 1         | 14        | 7         | 4         | -        | -        | 26         | 26         | 100       |      |      |
| French                       | 6         | 2         | 9         | 8         | -        | -        | 25         | 25         | 100       |      |      |
| Geography                    | 1         | -         | 2         | 2         | 1        | -        | 6          | 5          | 83        |      |      |
| History                      | 2         | 1         | 5         | -         | -        | -        | 8          | 8          | 100       |      |      |
| Italian                      | 1         | -         | -         | -         | -        | -        | 1          | 1          | 100       |      |      |
| Maths                        | 5         | 4         | 8         | 8         | 1        | 1        | 27         | 25         | 93        |      |      |
| Music                        | 2         | 4         | 3         | -         | -        | -        | 9          | 9          | 100       |      |      |
| Science (Single)             | 2         | 3         | 13        | 5         | 2        | 1        | 26         | 23         | 88        |      |      |
| Science (Double - Chemistry) | 1         | 4         | 6         | -         | -        | -        | 11         | 11         | 100       |      |      |
| Science (Double - Biology)   | -         | 2         | 5         | 4         | -        | -        | 11         | 11         | 100       |      |      |
| <b>Total</b>                 | <b>24</b> | <b>54</b> | <b>74</b> | <b>39</b> | <b>5</b> | <b>2</b> | <b>198</b> | <b>191</b> | <b>96</b> |      |      |
| %                            | 12        | 27        | 37        | 20        | 3        | 1        |            |            |           |      |      |
| Cumulative %                 | 12        | 39        | 76        | 96        | 99       | 100      |            |            |           |      |      |

| GCSE | Average Number<br>Of Passes | % with 5<br>(A*-C) | % Pass Rate<br>(A* - C) |
|------|-----------------------------|--------------------|-------------------------|
| 2004 | 6.1                         | 92.6               | 88.2                    |
| 2005 | 6.4                         | 86.4               | 91.6                    |
| 2006 | 6.7                         | 91.3               | 95.1                    |
| 2007 | 6.1                         | 83.3               | 87.5                    |
| 2008 | 7.0                         | 96.3               | 96.5                    |

| A-LEVEL       | A        | B        | C        | D        | E        | U        | Entries   | Passes<br>A - E | % Pass<br>Rate |
|---------------|----------|----------|----------|----------|----------|----------|-----------|-----------------|----------------|
| Art           | -        | -        | -        | 1        | -        | -        | 1         | 1               | 100            |
| English       | 3        | 2        | 1        | 1        | -        | -        | 7         | 7               | 100            |
| Maths         | -        | 2        | -        | -        | -        | -        | 2         | 2               | 100            |
| <b>Totals</b> | <b>3</b> | <b>4</b> | <b>1</b> | <b>2</b> | <b>-</b> | <b>-</b> | <b>10</b> | <b>10</b>       | <b>100</b>     |

| A-LEVEL     | 2004 | 2005 | 2006 | 2007 | 2008 |
|-------------|------|------|------|------|------|
| Entries     | 20   | 11   | 12   | 14   | 10   |
| Passes      | 20   | 11   | 12   | 14   | 10   |
| Pass Rate % | 100  | 100  | 100  | 100  | 100  |

| AS-LEVEL         | A        | B        | C        | D        | E        | U        | Entries   | Passes<br>A - E | % Pass<br>Rate |
|------------------|----------|----------|----------|----------|----------|----------|-----------|-----------------|----------------|
| Art              | -        | 1        | 1        | -        | -        | -        | 2         | 2               | 100            |
| Business Studies | -        | -        | -        | -        | -        | 1        | 1         | 0               | 0              |
| Dance            | 4        | 6        | 2        | -        | -        | -        | 12        | 12              | 100            |
| <b>Total</b>     | <b>4</b> | <b>7</b> | <b>3</b> | <b>-</b> | <b>-</b> | <b>1</b> | <b>15</b> | <b>14</b>       | <b>93</b>      |

AS Dance is taken by students in Year 11 at the Lower School.

| AS-LEVEL    | 2004 | 2005 | 2006 | 2007 | 2008 |
|-------------|------|------|------|------|------|
| Entries     | 29   | 28   | 36   | 25   | 15   |
| Passes      | 29   | 28   | 33   | 24   | 14   |
| Pass Rate % | 100  | 100  | 92   | 96   | 93   |

## BTEC NATIONAL AWARDS PERFORMING ARTS

|                 | Distinction | Merit | Pass | Total |
|-----------------|-------------|-------|------|-------|
| Arts Management | 9           | 1     | 3    | 13    |
| %               | 69          | 8     | 23   | 100   |
| Dance           | 21          | 1     | -    | 22    |
| %               | 96          | 4     | -    | 100   |

The National Award in Dance is taken by most students in their first year at Upper School and the award in Arts Management by most students in the second year. Each award has the same university points tariff as an A-level.

## COMPARISONS WITH NATIONAL GCSE RESULTS

|                         | A*    | A*/A  | A* - C |
|-------------------------|-------|-------|--------|
| The Royal Ballet School | 12.1% | 39.4% | 96.5%  |
| UK National Average     | 6.8%  | 20.7% | 65.7%  |

## Chief Operating Officer's Report

The basis for the School's financial stability is the agreement it has with the Department for Children, Schools and Families whose support I would like to acknowledge with gratitude.

The School has one criterion for entry: that entrants must have both the ability and commitment to become a professional ballet dancer. Fees are charged for places but considerable support is provided to parents and students as described below.

Students who are resident in the United Kingdom are eligible for aided places whereby parents pay a contribution to fees and living costs based on their income. Similar support for tuition costs is available to students who are resident elsewhere in the European Economic Area.

For aided places, the balance of fees is paid by the Department for Children, Schools and Families through its Music and Dance Scheme. In the 2007/08 academic year, the Department provided more than 80% of the School's regular income in the form of grant aid to parents under this scheme.

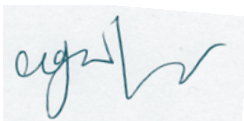
Many of the students at the School who come from outside the European Economic Area are supported with grants which the School receives from a number of trusts and charitable foundations which are listed on page 26.

The extent of financial support provided ensures that financial means is not a barrier to entry to the School for all United Kingdom students as well as for many students from abroad. In 2007/08 some 26% of parents were not required to make any contribution to their child's tuition fees or living costs.

An analysis of the School's operational income and expenditure for the year is shown in the statement opposite together with a balance sheet at 31 August 2008.

In 2007/08 income increased slightly compared to the previous year primarily because of a 4% increase in fees from September 2007 and a slightly greater number of pupils. Expenditure also increased but the overall outturn for the year was a surplus on School operations of £189,000.

The financial support from the Department underpins the School's finances. Income is augmented by donations from a number of individuals, charitable organisations and the Parent Teacher Association. The continued generosity of all those who support the School, both financially and otherwise, is very much appreciated by all those associated with the School.



**Alan Winter**  
Chief Operating Officer

For further information, the full financial statements and auditor's unqualified report should be consulted.

The Summarised Income and Expenditure Account on page 21 is a summary of information detailing the income and expenditure of the School operations only of The Royal Ballet School. This statement excludes income and expenditure in respect of designated and restricted funds with the exception of the Designated Partnership & Access Fund. This information has been extracted from the full statutory financial statements and may not contain sufficient information to allow for a full understanding of the financial affairs of the School.

The full Report of the Governors and financial statements have been subjected to an external audit and the audit report thereon was unqualified. The Directors approved the full Report of the Governors and financial statements of The Royal Ballet School on 29 January 2009 and these will be submitted to Members at the AGM on 16 March 2009, after which they will be filed with the Charity Commission and Companies House. A copy of these may be obtained by contacting the Head of Finance at The Royal Ballet School, 46 Floral Street, Covent Garden, London WC2E 9DA.

Signed on behalf of the Directors by David Norman on 16 March 2009.

**Solicitors:**  
Forsters, 31 Hill Street, London W1 5LS

**Auditor:**  
Baker Tilly UK Audit LLP, Registered Auditor, Chartered Accountants, 1st Floor, 46 Clarendon Road, Watford, Hertfordshire WD17 1JJ

**Bankers:**  
Barclays Bank Plc, Education Team, Level 28, Churchill Place, London E14 5HP

Lloyds TSB Bank Plc, City of London, 39 Threadneedle Street, London EC2R 8AU

**Registered Office:**  
46 Floral Street, Covent Garden, London WC2E 9DA

**Registered Charity No:**  
214364

## Summarised Income and Expenditure Account - School Operations

for the year ended 31 August 2008

|  | 2008<br>£'000 | 2007<br>£'000 |
|--|---------------|---------------|
| <b>INCOME</b>  |               |               |
| School fees and grants                               | 5,814         | 5,485         |
| Outreach activities                                  | 507           | 475           |
| Partnership & Access programme                       | 511           | 452           |
| Performances and tours                               | 126           | 133           |
| Donations  | 36            | -             |
| Investment income                                    | 53            | 38            |
|  | <b>7,047</b>  | <b>6,583</b>  |
| <b>EXPENDITURE</b>                                   |               |               |
| Charitable activities:                               |               |               |
| Full-time students                                   | 5,270         | 5,046         |
| Outreach activities                                  | 682           | 442           |
| Partnership & Access programme                       | 523           | 422           |
| Performances and tours                               | 245           | 191           |
| Cost of generating funds                             | 53            | 102           |
| Governance costs                                     | 85            | 116           |
|  | <b>6,858</b>  | <b>6,319</b>  |
| <b>NET INCOMING RESOURCES FROM SCHOOL OPERATIONS</b> | <b>189</b>    | <b>264</b>    |

## Summarised Balance Sheet

As at 31 August 2008

|  | 2008<br>£'000 | 2007<br>£'000  |
|--|---------------|----------------|
| <b>FIXED ASSETS</b>  |               |                |
| Tangible assets  | 31,898        | 29,046         |
| <b>CURRENT ASSETS</b>  |               |                |
| Stocks   | -             | 16             |
| Debtors  | 1,200         | 1,277          |
| Cash at bank and in hand                                       | 2,887         | 5,410          |
|  | <b>4,087</b>  | <b>6,703</b>   |
| <b>CREDITORS: amounts falling due within one year</b>          |               |                |
| School fees in advance   | (2,235)       | (2,038)        |
| Trade and other creditors                                      | (1,659)       | (1,561)        |
| <b>NET CURRENT ASSETS</b>                                      | <b>193</b>    | <b>3,104</b>   |
| <b>TOTAL ASSETS LESS CURRENT LIABILITIES</b>                   | <b>32,091</b> | <b>32,150</b>  |
| <b>CREDITORS: amounts falling due after more than one year</b> |               |                |
| Defined benefit pension scheme surplus/(liability)             | 129           | (50)           |
|  | <b>(248)</b>  | <b>(1,082)</b> |
|  | <b>31,972</b> | <b>31,018</b>  |
| <b>CAPITAL AND RESERVES</b>                                    |               |                |
| Unrestricted funds:  |               |                |
| School retained income   | 572           | 214            |
| Designated funds   | 30,626        | 28,330         |
| Restricted funds   | 774           | 2,474          |
|  | <b>31,972</b> | <b>31,018</b>  |

# The Royal Ballet School Staff and Governors

## PATRON

HM The Queen

## PRESIDENT

HRH The Prince of Wales

## VICE PRESIDENT

The Lady Sarah Chatto

## GOVERNORS

**Chairman:** David Norman

**Vice Chair:** Ricki Gail Conway

Jonathan Chenevix-Trench

Nicolas Chisholm

Richard Cunis

Tony Hall CBE

Candida Hurst-Brown

Janet Lambert

Sir David Lees

Professor Margaret Maden

Dame Monica Mason DBE\*

Patrick Maxwell

Kevin O'Hare\*

Charles Parker

Madeleine Plaut

Dame Antoinette Sibley DBE\*

Edmund Wallis

## GOVERNOR EMERITUS

The Lady Sainsbury CBE\*

## ADVISORY COUNCIL

David Bintley CBE\*

Darcey Bussell CBE\*

Felicity Clark

Sir Anthony Dowell CBE\*

Sir Peter Wright CBE\*

## SENIOR STAFF

### Assistant Director

Jay Jolley\* BA (Hons) Dip RBS (PDTIC)

### Chief Operating Officer

Alan Winter

### Academic & Pastoral Principal

Martin Fosten BA (Hons) PGCE

### Head of Lower School - White Lodge

Phillippa Hogg BEd (Hons)

### Ballet Principal Lower School - White Lodge

Diane van Schoor FISTD (CSF) Fin Dip FRSA  
(International Examiner)

### Principal – Outreach Programme

Kathryn Wade\* ARAD

### Head of Development

Sarah Eliot-Cohen

### Head of Finance

Pippa Adamson BSc (Hons) ACMA

### Deputy Head Lower School - White Lodge

Simon Bushnell BA

## FOUNDER

Dame Ninette de Valois OM CH DBE

## DIRECTOR

Gailene Stock AM ARAD

Grad Dip Ed (Visual and Performing Arts)

## BALLET STAFF

Gary Norman ARAD Grad Cert Ed (Visual and Performing Arts) *Senior Teacher - Upper School*

Petal Miller-Ashmole\* Grad Dip Ed (Visual and Performing Arts)

David Peden\* ARAD Dip PDTIC

Anita Young\* FISTD ARAD

Meelis Pakri

Katya Zvelebilova LISTD ARAD Dip PDTIC

(National Ballet School of Canada)

Diane van Schoor FISTD (CSF) Fin Dip FRSA

(International Examiner)

Hope Keelan Dip RBS (TTC) ARAD ATC (Hons)

*Assistant Ballet Principal - Lower School*

David Yow Dip RBS (TCPD) LISTD BSc (Hons)

Antonio Castilla

Nicola Katrak\* ARAD

Alexandra Foley RAD Dip PDTIC

Tania Fairbairn BPhil (Hons) Dip RBS (TTC) ARAD

AISTD (CB)

Jessica Clarke\* Dip RBS (PDTIC)

## PERIPATETIC STAFF

Jane Burn\* *Pilates/Body Conditioning - Upper School*

Lucy Galperin *Gymnastics - Lower School*

Leanne King Cert Ed *Contemporary - Upper School*

Anya Linden CBE\* *Solos - Lower School*

Amanda Maxwell Dip RBS TCPD ARAD *Character - Upper School*

Anna Meadmore MA Dip RBS (TTC) ARAD *History of Ballet - Lower School*

Mark Priestley Dip Ed *Physical Education and Upper Body Instructor - Lower School*

Simon Rice *Morris Dancing - Lower School*

Sinead Rushe TCRG *Irish Dancing - Lower School*

Yolande Yorke-Edgell *Contemporary - Lower School*

## CHOREOGRAPHIC COURSE COORDINATORS

Dr Susie Cooper PhD ARAD Dip PDTIC *Lower School*

Kate Flatt Dip RBS (TTC) *Upper School*

Jennifer Jackson\* MA (Dist) *Upper School*

## GUEST TEACHERS

Tamara Rojo\* *Resident Guest Teacher Classical - Upper School*

Laura Alonso *Classical - Upper School*

Avril Anderson *Choreography/Music - Upper School*

Gary Avis\* *Classical - Outreach Programme*

David Bintley\* *Classical - Upper School*

Federico Bonelli\* *Classical - Upper School*

Matthew Bourne *Dance Appreciation - Upper School*

Kim Brandstrup *Choreography - Upper School*

Susan Crow *Choreography - Upper School*

Johnny Eliason *Classical - Upper School*

Giraldo Escobar *Argentinian Tango - Upper School*

David Fielding *Choreography - Upper School*

Nicola Gaines *Baroque Dance - Outreach Programme*

Richard Glasstone *Classical and Mime - Lower School*

Leon Hazlewood *Swing and Lindy Hop - Upper School*

Wayne McGregor *Contemporary - Upper School*

Steven McRae *Classical - Upper School*

Kerry Nicholls *Contemporary - Upper School*

Galina Samsova *Classical - Upper School*

Jeannie Steele *Contemporary - Upper School*

David Sutton-Anderson *Choreography/Music - Upper School*

Christiane Valha *Argentinian Tango - Upper School*

Natalie Weir *Contemporary - Upper School*

Sherrill Wexler *Spanish Workshop - Lower School*

Francesca Zumbo *Classical - Upper School & Outreach Programme*

Elizabeth Allinson Agharokh *Science Laboratory Technician*

Melanie Brice ARCM Dip Dalcroze Inst *Senior Teacher, Head of Music, Ex Arts*

Simon Bushnell BA *Deputy Head of Lower School, ICT*

Sarah Byrne BA (Hons) PGCE *Science*

Aurélien Derguesse Licence LLCE PGCE *French, Library*

Alison Dormer MA PGCE *Head of Science*

Craig Fortnam BA (Hons) FLCM *Music, Ex Arts*

Martin Fosten BA (Hons) PGCE *Business Studies, SIR*

Dominique Foxton BSc (Hons) PGCE *Head of Mathematics*

Robert Green BA (Hons) PGCE *Mathematics*

Suzanne Guntton BA (Hons) AKC PGCE *Head of English, PSHCE Coordinator*

Anna Meadmore MA Dip RBS (TTC) ARAD *Head of Academic Dance Studies*

Andrew Nowak BA (Hons) PGCE *History, PE*

Sally Phoenix MA PGCE *Head of Ex Arts, English, Drama*

Catherine Pickston BA (Hons) PGATC *Art, Ex Arts*

Mark Priestley Dip Ed *SIR*

Clare Quamina BA (Hons) PGCE *Head of Art, Ex Arts*

Stephanie Ritchie MA PGCE *Head of Modern Languages*

Janet Swindall BA (Hons) MSc FRGS PGCE *Head of Geography, Mathematics*

Charlotte Taylor BA (Hons) PGCE *English, SENCO*

Emmanuelle Whale Licence ès Lettres *French*

Marie-Louise Wohlgemuth BA PGCE *French, ESOL Coordinator, Italian*



Eye-catching *i-relations*. Jeremy Curnier and Leticia Stock in Wayne McGregor's challenging and exciting new work



Joy abounds in Napoli  
*Divertissements*, performed  
with finesse by 2nd Year Upper  
School students



## ADMINISTRATION

Suzi Abensur *School Secretary - Lower School*  
Marius Arnold-Clarke BSc (Hons) *ICT Technician - Lower School; Theatre Manager - Upper & Lower School*  
Carrie Brooke-Mellor *School Secretary - Upper School*  
Ginny Brown LRAD AISTD *Programme Manager - Partnership and Access Programme*  
Sebastien Calabretto BVA *Administrative Assistant - Outreach Programme*  
Pippa Cobbing LRAD ARAD *primarySTEPS Coordinator - Partnership and Access Programme*  
Shona Devine BA RAD RTS *Summer School Coordinator - Outreach Programme*  
Anna Fineman MA PGCE *Museum and Archives Assistant*  
Jim Fletcher MA (Hons) PGCE *Development Manager*  
Sheila Gresswell *Senior Administration Secretary - Lower School*  
Rachel Hollings BA (Hons) ALCM *Artistic Administrator*  
Janice Howe BSc *School Secretary - Lower School*  
Sylvia Hubbard Dip RBS (TTC) AISTD *Associates Coordinator - Outreach Programme*  
Halim Lais BA (Hons) *Finance Assistant*  
Laurajane Lavender *Events Coordinator - Outreach Programme*  
Alexandra Leonard BA (Hons) *Coordinator - Partnership and Access Programme*  
Bim Malcomson BA (Hons) *Artist in Education*  
Fiona McNaught *Publications Manager*  
Anna Meadmore MA Dip RBS (TTC) ARAD *Special Collections Manager*  
Carol Moore *Reception*  
Hester Moore BFA (Hons) *Development and Publicity Coordinator*  
Sabine Naghdi PhD Great Honours *Assistant to the Manager - White Lodge Museum*  
Sue Oak *Administration Manager*  
Carol Pakri BFA (Hons) *Assistant to Partnership and Access Programme*  
Poppy Riddle BA (Hons) *Administration Assistant*  
Liz Thorington *Auditions Coordinator - Outreach Programme*  
Hervé Voisin Dip in Business Management (TOGE) *Administrator - Outreach Programme*  
Helen Zeederberg *Finance Support Coordinator*

## WARDROBE MISTRESSES

Tessa Balls *Upper School*  
Carole Leicester BA (Manc) *Lower School*

## PIANISTS

Guy Attew *Lower School*  
Dr Alastair Bannerman PhD *Upper School*  
Domenica Cardullo Perf Dip Conservatoire, Italy *Upper School*  
Stefano Curina Perf Dip Conservatoire, Italy *Lower School*  
Derek Downes GLCM FLCM LLCM (TD) *Upper School*  
Elvira Gavrilova *Upper School*  
Olga Mazour Perf Dip Conservatoire, Russia *Lower School*  
Tracey Renwick BMus (Hons) *Upper School*  
Elizabeth Sluman *Upper School*  
David Smith LRAM (Hons) Perf Cert RAM (Hons) LGSM *Lower School*  
Andrew West LTCL *Lower School*

## INSTRUMENTAL TEACHERS

David Barry *Percussion, Drum Kit*  
William Burrows BMus (Hons) *Cello*  
Craig Fortnam BA (Hons) FLCM *Guitar*  
Nathan Hassall BMus (Hons) *Clarinet, Saxophone*  
Susan Morfee ARCM LTCL *Flute*  
William Morris BA (Hons) *Piano, Trumpet*  
Geraldine Peach Dip TCL (Perf) *Various*  
Hannah Pedley *Singing*  
Eleanor Percy BMus (Hons) FTCLM *Violin, Viola*  
Jennifer Quigley FTCL LTCL *Singing*  
Penelope Whinnett GMus RNCM (Hons) *Piano*

## ASSOCIATE PROGRAMMES

Melanie Agar BPhil (Hons) Dip RBS (TTC)  
Suzie Amiet Dip RBS (TTC)  
Amanda Armstrong Dip PDTD  
Paul Bayes-Kitcher Dip PDTD RAD  
Jessica Clarke\* Dip RBS (PDDC)  
Victoria Collinson Dip RBS (TTC)  
Jayne Cooper Dip RBS (TTC) FISTD ARAD  
Tania Fairbairn BPhil (Hons) Dip RBS (TTC)  
Helen Farrell Dip RBS (TTC)  
Graham Fletcher\* Dip RBS (TCPD)  
Nicola Gaines BPhil (Hons) LISTD  
Sylvia Hubbard Dip RBS (TTC) AISTD  
Jessica Kidwell ACSM  
Harvey Klein BA RAD Stott Pilates  
Annette Pain\*  
Karen Paisey\*  
Carol Pakri BFA (Hons)  
Catherine Royce  
Samira Saidi\* ARAD Dip RBS (PDDC)  
Marion Tait\* CBE ARAD  
Neil Westmoreland Dip PTDTD

## MEDICAL SUPPORT STAFF

**Orthopaedic Consultant**  
Mr N J Goddard MB FRCS

**Medical Officer - Upper School**  
Dr Alison Joy MA DRCOG DCH MRCP MRCP

**Sports Physicians - Upper School**  
Dr Philip Bell MBChB MRCP DipSportsMed FFSEM FISEM  
Dr Ian McCurdie MSc (SportsMed) FRCP FFSEM (UK)

**General Practitioners - Lower School**  
Dr Jonathan Barnes BSc MB BS MRCP  
Dr Sophie Jukes BSc MB BS DRCOG MRCP

**Physiotherapists**  
Janet Briggs MSc MCSP  
Rachel Quedstedt BPhy (Hons) MCSP MAPA SRP

Prof Robert Bor CPsychol CSci FBPS FRAeS UKCP Reg  
*EuroPsy School Counsellor*  
Jasmine Challis BSc SRD *Nutritionist/Accredited Sports Dietician*  
Frances Rees DEN *School Nurse - Lower School*

## HOUSE STAFF

**Upper School**  
Iain Coyne, Jeanette Nap, Ruth Pepper  
*Accommodation and Pastoral Officers*

**Lower School**  
Jane Linkin *Deputy Head of Boarding*  
Lynne Hood *Teaching Cert of Primary Education*  
Carol Jones  
Klara Mottlova  
Greg Roberts  
Sue Roberts  
Lynda Shaw  
Milton Brown, Daniel Schenke *GAP Students*

## FACILITIES, HOUSE SERVICES & CATERING

Ian Cordery *Estates Manager*

**Lower School**  
Samantha Fisher *House Services Manager*  
Delia Bedeau *General Duty Manager*  
Tanya Williams *Administration Duty Manager*  
Frances West *Weekend Duty Manager*  
Gerald Gibbs *Daily Maintenance*  
Ron Elsmere *Daily Maintenance*  
Brian Jones, Nick Cartmel and Eamonn Linton  
*School Drivers*

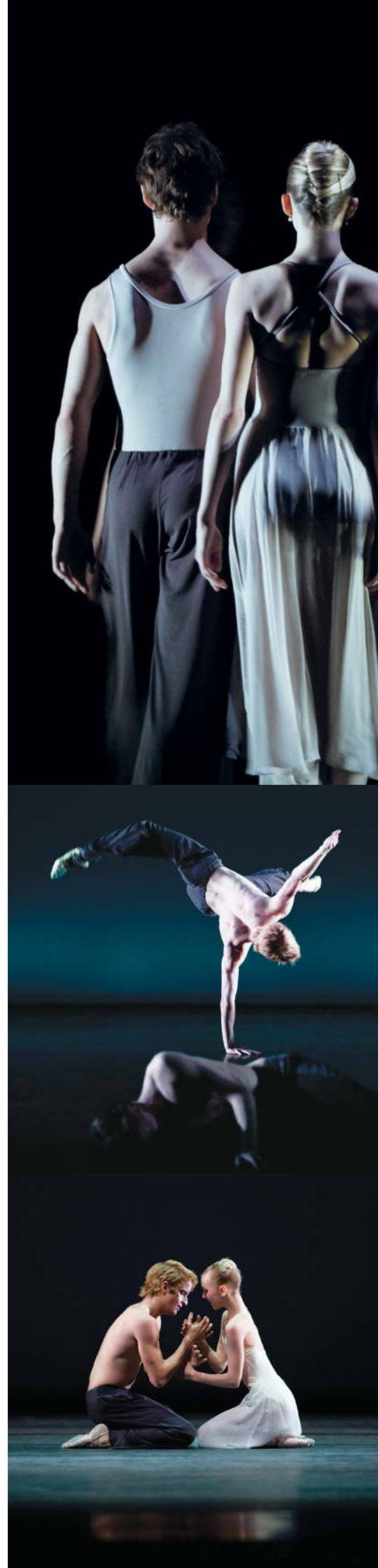
**Upper School**  
Michael Zammit *Daily Maintenance*

\*Currently dancing or has danced with The Royal Ballet and/or Birmingham Royal Ballet (formerly Sadler's Wells Royal Ballet)

## Royal Ballet School Sponsorship 2007 - 2008

In addition to the core funding provided by the DCSF through the Music and Dance Scheme, the School is grateful for support received from the following:

Valerie Adams  
The Askew Scholarship Fund  
The Atlantic Foundation  
The Ballet Association  
City of Bradford Metropolitan District Council  
Cyril Beaumont Award  
Bloomsbury Flowers –  
Stephen Wicks and Mark Welford  
The Boscawen Bequest  
Jill Brittlebank  
The Calleva Foundation  
The Clore Duffield Foundation  
J Edward Conway Fund  
Ricki Gail Conway  
Gina Cromwell  
Richard and Jennie Cunis  
Dame Ninette de Valois  
Giampiero Dotti  
The Earmark Trust  
The Gordon Edwards Charitable Trust  
Nina Finburgh  
The Fishmongers' Company  
Freed of London Limited  
Friends of The Royal Ballet School  
Alan Graham  
Growfast Electrical  
Guthrie Trust  
Patricia K Hagan  
Audrey Harman Award  
Hilton Town Charities  
Hindley and Abram Grammar School  
Foundation  
Margaret L Hine  
HSBC Global Education Trust  
Isabella  
The Morris Kemp Scholarship  
Robert Kimber  
Cecil King Memorial Foundation  
The Leverhulme Trust  
The Linbury Trust  
The London Ballet Circle  
The London Children's Ballet  
John Lyon's Charity  
Sir Kenneth MacMillan Fund for Young  
Dancers  
Lady MacMillan  
Jocelyn Mather  
John McAslan Family Trust  
McDonald's Ballet Scholarship  
The Mercers' Company  
John Mitchell  
Gail Monahan  
John Murray  
NJL Foundation  
Norlan Resources  
Fergus Normoyle  
The Rudolf Nureyev Foundation (UK)  
April Olrich  
The Gwynne Parry Memorial Scholarship  
Stanley Picker Charitable Trust  
Maurice Pinto  
Prix de Lausanne  
Dame Ruth Railton  
The Rotary Club of St Ives  
The Royal Ballet School PTA  
David Rymer Charitable Trust  
Pamela Self  
Serco Group plc  
Brian Shaw Memorial Scholarship Fund  
Edward and Lois Sieff Charitable Trust  
Geoffrey Spackman  
Pamela Stern  
Sussex Opera and Ballet Society  
Sutton Scholarships  
The Tait Memorial Trust  
Textile Industry Children's Trust  
Carolyn Usherwood  
Norman Vaughton  
Veronica Bruce Memorial Dance Trust  
The Wall Trust  
Mr and Mrs Jim Walsh  
Peter Wilson  
Amy Worrell  
The Worshipful Company of Gold and Silver  
Wyre Drawers  
Zodiac Maritime Agencies Ltd





Mood swings: Graduates performed with heart and soul in Natalie Weir's dramatic work *The Unwritten*



## Royal Ballet School Contracts 2007 - 2008

Congratulations to our 2008 Graduates on being offered the following professional contracts:

James Hay - The Royal Ballet

Dawid Trzansimiech - The Royal Ballet

Dusty Button - Birmingham Royal Ballet

Delia Mathews - Birmingham Royal Ballet

Nicki Moffatt - Birmingham Royal Ballet

Antoinette Brooks-Daw - Northern Ballet Theatre

Yoshihisa Arai - Northern Ballet Theatre

Brice Asnar - Northern Ballet Theatre

Lauren Bryden - Scottish Ballet

Victor Zarallo Munoz - Scottish Ballet

Dylan Gutierrez - San Francisco Ballet

Alexander Loxton - Dutch National Ballet

Richard Jones - Dresden Ballet

Lucy Emery - Norwegian Ballet

Andrew Peasgood - Ballet du Rhin

Katy Harvey - Royal Ballet of Flanders

Marjorie Lenain - Jeune Ballet du Cannes

Saori Ishiyama - Vienna Festival Ballet

Jessica Whiting - Vienna Festival Ballet

Sophie Wilkes - Vienna Festival Ballet

Jaered Glavin - Royal New Zealand Ballet

Joshua McSherry-Gray - Royal New Zealand Ballet

Laurie McSherry-Gray - Royal New Zealand Ballet

Thomas Snee - National Ballet of Canada

Guy Wheatstone - South African Ballet Theatre

# White Lodge Redevelopment Appeal

The redevelopment of our Lower School has cost £22 million and spanned a 3 year/3 phase building programme. To date, 87% of the funding has been secured thanks to the generosity of our donors.

## FOUNDING BENEFACTOR

The Clore Duffield Foundation  
Ricki and Robert Conway  
Department for Children, Schools  
and Families  
Garfield Weston Foundation  
The Mercers' Company  
The Monument Trust  
John and Anya Sainsbury

## KNIGHTS OF WHITE LODGE

Stephen and Caroline Butt  
Lloyd and Sarah Dorfman  
Thomas and Deirdre Lynch  
Dr and Mrs Pavel Maslovsky  
David Norman  
Simon and Virginia Robertson  
John and Geraldine Whittaker

## FOUNDING SPONSOR

Madeleine and Timothy Plaut  
UBS

## FOUNDING DONOR

Christopher Holdsworth-Hunt  
The Dr Mortimer and Theresa Sackler  
Foundation  
Visa International

## FOUNDING PRIMA PATRON

John and Catherine Armitage  
Sir Anthony and Lady Bamford  
Christina and Timothy Benn  
Dianne and Michael Bienes  
Blavatnik Family Foundation  
Ted and Mori Brian  
Bright Future Trust  
Susan and John Burns  
The Crown Estate  
Mr and Mrs Richard Cunis  
Sir Harry and Lady Djanogly  
Dr Arabella Duffield  
Julia Farron  
The Shauna Gosling Trust  
In memory of Atalanta C Goulandris  
Mrs Patricia K Hagan  
Mr and Mrs Peter Hambro  
The Peter Harrison Foundation  
Mrs Charlotte Heber Percy  
Marina Hobson  
Mr and Mrs Nigel Hurst-Brown  
Derek and Wendy Kingsbury  
The Marina Kleinwort Charitable Trust  
Andrew and Elizabeth Morison  
David and Diana Norman  
Charles and Victoria Parker  
The Priestley Family  
John and Jill Ritblat

Sir Nigel and Lady Rudd  
The Rt Hon The Lord Sterling of Plaistow  
Robin and Frances Tomkins  
The Steel Charitable Trust  
Helen Webb  
Penna and William Wells

## FOUNDING PATRON

Mr and Mrs David Acland  
B Attitudes Foundation  
The Band Trust  
Mr and Mrs Andrew Beeson  
Tony and Gisela Bloom  
Michael Buckley  
N P H R Chamberlin  
Lucy and John Chenevix-Trench  
The John S Cohen Foundation  
Sir Ronald and Lady Cohen  
Antonio and Maria Correia  
Mr and Mrs Karl Dannenbaum  
Mr and Mrs Jonathan Davie  
Ian and Penny Davis  
Haruo and Keiko Enomoto  
Peter and Judith Foy  
G D Charitable Trust  
Mr and Mrs B Goulandris  
Mr and Mrs Ross Graham  
Sir Ronald Grierson

Mr and Mrs Benjamin H Griswold IV  
Mr and Mrs R Stephen Hale  
Devens and Sandy Hamlen  
Andre and Rosalie Hoffmann  
Mr and Mrs Charles Hue Williams  
Peter Jansen Charitable Trust  
Lord and Lady Kalms  
Mr and Mrs Sol Kerzner  
Robert and Susan Klein  
The Hon Timothy and Mrs Knatchbull  
The Laing Family Charitable Settlement  
Mr and Mrs D J Lemos  
Cynthia and Merrill Magowan  
Mark and Nina Magowan  
The Peter and Elizabetta Mallinson Trust  
Albert and Kay Mazzo  
Mr Garth Milne  
Richard and Rogy Nelson  
Paul and Catherine Nix  
Sammy and Aviva Ofer  
Eyal and Marilyn Ofer  
The Ogilvie Thompson Foundation  
Mr and Mrs David Peake  
Mr and Mrs John Prens  
Rupert and Serena Prest  
Mike Richards  
John and Pit Rink  
Kerry and Dimity Rubie  
The Audrey Sacher Charitable Trust

Andrew and Denise Saul  
Dominic and Antonia Slade  
Charles and Delphine Stevens  
Leila and Melville Straus  
Robert and Patricia Swannell  
Mr and Mrs John Vartan  
Barry and Teri Volpert  
Ben and Christine Wrey  
Henri Zimand

## FOUNDING SUPPORTER

Robin and Fiona Allen  
Karim Anabtawi  
The Ashdene Trust  
Nicholas and Diana Baring  
Barnsley, Hewett and Mallinson  
Anthony and Eva Barton  
Keith and Meri Benham  
Mrs Judith Bollinger  
Mr W Bollinger  
Charles and Leonie Booth-Clibborn  
Jean and John Botts  
Sir Richard Brooke Bt  
David Brownlow  
Mr and Mrs Michael Butt  
Peter and Sally Cadbury  
Peter Canter  
Mr Michael Carpenter  
Mrs Lizzie Cathery  
Mr and Mrs Nicholas Clive-Worms  
Sir Jeremiah Colman Gift Trust  
David Davies  
Kelly and George Davis  
Miel de Botton Aynsley  
Mrs Linda de Picciotto  
Sir Evelyn de Rothschild  
Jennifer Edwards  
Violando Embiricos  
Graham S Fletcher  
Annette Fraser  
Dhanraj Gidwaney  
Geoffrey Griffiths  
Mrs Gabrielle Hungerford  
Dr and Mrs John Ind  
Nina Irwin  
Sir Martin and Lady Jacomb  
Donald Kahn  
Tim Landon  
Lassalle Fund  
Le Bas Investment Trust Ltd  
Mark and Sophie Lewisohn  
Alan and Virginia Lovell  
Miss Emma Lovell  
Miss Lucinda Lovell  
David and Mary Male  
The Manifold Trust  
Lord and Lady Marshall of Knightsbridge

David and Ruth Martin  
Joanna Millan  
Peter Moores Foundation  
Sir Bryan and Lady Nicholson  
Ann Osborne  
Janet Qualtrough  
David Rymer Charitable Trust  
Rose Scrope  
Dame Antoinette Sibley  
Dennis and Charlotte Stevenson  
Lady Henrietta St George  
Rachael Stearns  
Mr and Mrs J W Steele  
Stuart and Jill Steele  
Mr A J B Vernon  
Harold and Olga Wienand  
Peter Wilmot-Sitwell  
The Worshipful Company of Gold and Silver  
Wyre Drawers  
Princess Josephine zu Lowenstein

## FOUNDING CONTRIBUTOR

All Saints Church East Sheen  
Miss B J Allday  
Ian and Gillian Bailey  
Toby Baines  
Mrs Isla Baring  
David Barnett  
Anne and Rock Battye  
Mrs Richard Bonsor  
Richard Bowden Doyle  
Lady Bowman-Shaw  
Mr and Mrs L K Bracewell  
P E V Bridge  
Mr T A Bristowe  
The Roger Brooke Charitable Trust  
Mr Raymond Burton  
Monique Byrne  
Roger and Susie Cane  
David and Patricia Chapman  
Mr and Mrs Anthony Chisenhale-Marsh  
Hilary S Coleman  
Paul Crean  
Neil Daniels  
Vera Daniels  
Professor Martyn P Davis  
DDC  
Miss Jacqueline Dean  
Mrs S M Dubreuil  
Jake and Fiona Eberts  
Mrs A R Elgood  
C E Eliot-Cohen Charitable Settlement  
Isaac Evans  
Mrs Jennifer Fenney  
Ms Lisa Fewtrell  
Elizabeth Floyd  
Mike Francies

Mrs Christina Fummo  
 Elaine R Garwood  
 Mr Bamber Gascoigne  
 Charles Glanville  
 Mr and Mrs John Godfrey  
 Drs Kevin and Barbara Grant  
 Caroline Grayburn  
 Dame Beryl Grey  
 Tim Hailstone  
 Joan Hale  
 John Halliwell  
 Hammonds Charitable Trust  
 John and Diana Hayward  
 Dr Arthur Hearnden  
 Friends of the Historic Houses Association  
 Mrs P Holland  
 Violet Hopwood  
 Edward and Diana Hornby Charitable Trust  
 Mrs Meg Horvath  
 Mrs Victoria Howes  
 In memory of Alan Hughes  
 Karen Hughes  
 Lord and Lady Inchyra  
 Raymonde and Ian Jay Charitable Trust  
 Robert Kimber  
 Rupert King  
 Megan Kirley  
 Janet Lambert  
 Joyce Lancaster  
 Mrs C A Leakey  
 Mr A P and Mrs S Leney  
 Linklaters Foundation  
 Mr David Littaur  
 Mr and Mrs George Loudon  
 Mark and Liza Loveday  
 Mr and Mrs Mark Loxton  
 Sheila J MacDonald  
 J K MacDonald  
 Georgina Macpherson  
 Mr William Maltby  
 In memory of Joan Mark  
 Patrick and Lucy Maxwell  
 Rose Maxwell  
 Timothy and Kirstie Maxwell  
 Mr J M and Mrs A M McLaren  
 Ian Millett  
 Tom and Jackie Moloney  
 Mrs Penelope Mountain  
 Sara Mulligan  
 Mr and Mrs K Naghdi  
 Colin Gray Nears  
 Bryan Norman  
 Davina Norman  
 Helen Norman  
 In memory of Alma June Nye  
 Mrs Lindsay O'Hara

Mrs Fiona Olesen  
 Matthew Page  
 Christopher Palmer-Tomkinson  
 David and Tricia Peel  
 Mrs Joan Penn  
 Mr T J and The Hon Mrs O M Pethybridge  
 Lady Purves  
 Mr and Mrs James Reeve  
 Carol Rentoul  
 Mark Roberts  
 Trevor Robinson  
 Mrs Olaf Rogge  
 Cliff and Jenny Royal  
 Royal Borough of Kensington & Chelsea  
 Decorative & Fine Arts Society  
 Mr and Mrs Ian Sharratt  
 Julian Sheffield  
 S R A Sheffield  
 Mr and Mrs M Shenton  
 Prue Skene  
 Mr and Mrs N Stein  
 Timothy Stephenson  
 Tatler Magazine  
 C J Thompson  
 Mrs Brigitte Tiller  
 Trevor Turner  
 Mrs Nicholas Verey  
 Amanda Ward  
 Mr and Mrs Ian Whiting  
 Andrew and Caroline Whittle  
 Bridget Wilkinson  
 Gwyneth Williams  
 Graham and Maria Wrigley  
 Mr William G H Wye  
 Zetland Charitable Trust

#### OTHER SUPPORTERS

The Prince's Charities Foundation

The next generation: Charlotte Edmunds and Thomas Bedford, both Year 7, in the Pavlova studio at White Lodge



# Royal Ballet School Floral Street Appeal

We list below, with greatest appreciation, all those who have supported us so generously. We also thank all those who wish to remain anonymous.

## PRINCIPAL BENEFACTOR

John and Anya Sainsbury

## FOUNDING BENEFACTOR

The Annenberg Foundation  
The Dalriada Trust  
Department for Children, Schools  
and Families  
Hutchison Whampoa Ltd  
Lend Lease  
The Mercers' Company  
The Weston Family

## FOUNDING SPONSOR

CHK Charities Limited  
Sir Harry and Lady Djanogly  
Lord and Lady Harris of Peckham  
The Headley Trust  
The Monument Trust  
David and Diana Norman  
The Peninsular & Oriental  
Steam Navigation Company  
The Wolfson Foundation  
Zodiac Maritime Agencies Limited

## FOUNDING DONOR

Anglo American Plc  
Foundation for Sport & the Arts  
Mr and Mrs Christopher  
Holdsworth Hunt  
Donald Kahn  
The Rt Hon The Lord Sterling  
of Plaistow  
UBS Warburg

## FOUNDING PRIMA PATRON

David and Eve Abbott  
The Ashden Trust  
Barclays Plc  
Christopher Beatson-Hird  
Julian and Bronwen Bevan  
Edward Bonham Carter  
Marjorie Bowden  
David Brazier  
Roderic I Bullough  
Raymond Burton  
Sir Dominic Cadbury  
The Cadogan Charity  
Peter Canter  
Cazenove Charitable Trust  
Jonathan and Lucy Chenevix-Trench  
Sir Ronald and Lady Cohen  
Robert and Ricki Gail Conway

Jonathan Davie  
Peter Foy  
Freshfields Bruckhaus Deringer  
The Friends of Covent Garden  
Gerrard Management  
Goldman Sachs International  
Lady Gosling  
The Gosling Foundation  
Basil and George Goulandris  
Patricia K Hagan  
S G Hambros  
Lord Hastings  
Charlotte Heber Percy  
Caroline Hue Williams  
Mrs Charles Hue Williams  
Patrick and Gabrielle Hungerford  
Nigel and Candy Hurst-Brown  
The JJ Charitable Trust  
Sir Stanley Kalms  
Ian and Caroline Laing  
Leathbond Ltd/Chandris Group  
The Mark Leonard Trust  
Linklaters  
In memory of Sir Joseph Lockwood  
John Lyons Foundation  
George Magan  
Mrs Robert Magowan  
The Peter and Elisabetta  
Mallinson Trust  
Mr and Mrs John Maxwell  
Merrill Lynch  
JP Morgan Charitable Trust  
Morgan Stanley Dean Witter  
Andrew Morison  
Charles and Victoria Parker  
Francis and Geraldine Plowden  
Quercus Trust  
John Ritblat  
Simon and Virginia Robertson  
Lord Rothschild  
Jean Sainsbury Royal Opera  
House Fund  
Mr and Mrs Jeremy Soames  
Sally and Colin Southgate  
Michael and Gail Squires  
Telegraph Charitable Trust  
The Thornton Foundation  
The Trusthouse Charitable  
Foundation  
John Vartan  
The Weinberg Foundation  
Sir Peter Wright  
Jayne Wrightsman

## FOUNDING PATRON

John Alexander  
Brenda Bolton Anderson  
Victoria Asprey  
The Band Trust  
Nicholas and Diana Baring  
The Hon Lady Cazalet  
The Hon Colette Clark  
Sir David and Lady Davies  
Sir Anthony Dowell  
Jake and Fiona Eberts  
Elizabeth Floyd  
Tom and Betty Frost  
Mr DC Gidwaney  
Atalanta Goulandris  
David and Catherine Graham  
Dame Beryl Grey  
Benjamin H Griswold  
Rupert and Robin Hambro  
JG Hogg Charitable Trust  
IMI PLC  
Sir Martin and Lady Jacomb  
David James  
Charles and Tessa King-Farlow  
Mr and Mrs Ronald Lauder  
Lawrence Graham  
Graham Lee  
Mercury Asset Management  
Garth Milne  
Peter Moores Foundation  
Michael and Delia Morley  
Brian Nicholson  
Gailene and Gary Norman  
Mr and Mrs Roger Phillimore  
The Countess of Portsmouth  
Kerry and Dimity Rubie  
The Dr Mortimer and Theresa  
Sackler Foundation  
Mrs Jean Sainsbury  
Sir David Scholey  
David and Pamela Self  
Dame Antoinette Sibley  
Mrs Andrew Soundy  
Jane Stevens  
Lady Henrietta St George  
Robert and Patricia Swannell  
TI Group  
Ben and Christine Wrey

## FOUNDING SUPPORTER

Michael and Anne Allen  
Robin Allen  
The Ballet Association

Bamford Charitable Foundation  
Banque Internationale  
A Luxembourg  
Mr and Mrs A Beeson  
David Bintley  
Sir Christopher and Lady Bland  
Mr and Mrs Richard Briance  
Peter Brocklehurst  
Chichester Charitable Trust  
Felicity Clark  
Sir Michael Colman  
Geoffrey Collens  
Marco Compagnoni  
Sir Peter and Lady Davis  
Leopold de Rothschild  
Jill Draper  
Violando Embiricos  
Julia Farron  
Graham S Fletcher  
The JA Floyd Charitable Trust  
Anna Goulandris  
Geoffrey Griffiths  
Joan Hale  
Sir Timothy Harford  
Roger Harrison  
Beryl Husain  
Jeremy and Gillian Isaacs  
Robert Kimber  
Ray Knight  
Sir David Lees  
Princess June Lobanov-Rostovsky  
Mr and Mrs Alan Lovell  
Donald MacLeary  
Lady MacMillan  
Lord and Lady Marshall  
of Knightsbridge  
Patrick and Lucy Maxwell  
Mr and Mrs Timothy Maxwell  
Pamela May  
Mrs Joanna Millan  
Ian Millet  
Modiano Charitable Trust  
Dru Montagu  
Mrs Anthony Nares  
David and Carolyn Newbigging  
Brian Nicholson  
Sir Bryan and Lady Nicholson  
Bryan Norman  
Ronnie Norman  
Notgrove Charitable Trust  
Ann Osborne  
PF Charitable Trust

Dame Merle Park  
The Earl of Portsmouth  
Mrs John Prens  
Hambro Rabben  
Sir Michael Richardson  
Robert Fleming Holdings Ltd  
The Rudolph Nureyev Foundation  
Mr and Mrs Jonathan Rushworth  
David Rymer Charitable Trust  
Mr and Mrs Jeremy Skinner  
Stanley Foundation Limited  
Mr and Mrs Donald Stearns  
Stuart Steele  
Sir Angus Stirling  
S&U Plc  
Mr and Mrs Louis A Tanner  
Patsy Tarr  
Sir John Tooley  
Andrew Tuckey  
Edward F Ulmann  
Paul van Vlissingen  
Charles W Wall  
Stephen Wicks  
Mr and Mrs HB Wienand  
Peter Wilson

## FOUNDING CONTRIBUTOR

Altel Mortgage Solutions  
L O Anderson  
Mr and Mrs G Bailey  
The Hon Mark Baring  
Mr James and Lady Emma Barnard  
David Barnett  
Anne and Rock Battye  
Michael Berkeley  
Lady Biddulph  
Lord Blyth of Rowington  
Susan Bonsor  
John Botts  
Lord Brabourne and Countess  
Mountbatten of Burma  
Janet Briggs  
Piers Brooke  
Sir Richard Brooke  
The Roger Brooke Charitable Trust  
Mr and Mrs M Burrell  
Darcey Bussell  
Patricia Chadwick  
David and Patricia Chapman  
Charter plc  
Nicolas and Auriol Chisholm  
Clifford Chance  
Nicholas Coats



D Cobern  
 Hilary Coleman  
 Richard Cooper  
 Caroline Cormack  
 Mr and Mrs d'Arcy Irvine  
 Earl and Countess of Dalkeith  
 Lord and Lady Dalmeny  
 Hilary David  
 David Davies  
 Miel de Botton Aynsley  
 Michel de Carvalho  
 Mr and Mrs E de Villiers  
 Lord and Lady Douro  
 Mary Drage  
 Alan Elliot  
 Simon Elliot  
 Miss Sandra L Fairbairn  
 Fife Charitable Trust  
 Anna Ford  
 Elaine R Garwood  
 Paul Gibson  
 The Gillespie Trust  
 Charles Glanville  
 David Godfray  
 Mr and Mrs J Godfrey  
 Ross Goobey Charitable Trust  
 WLS Guinness  
 Haberdashers' Company  
 Helen and James Hamilton  
 Dr Arthur Hearnden  
 Heathgate Charitable Trust  
 James Hervey-Bathurst  
 Violet R Hopwood  
 Amanda Howard  
 M Illott  
 Lord and Lady Inchyra  
 Invesco  
 Nina Irwin  
 Sir Brian Jenkins  
 Philip Knatchbull  
 Timothy and Isabella Knatchbull  
 Tim Landon  
 Mr and Mrs Frank le Roex  
 Liberty International  
 Mr and Mrs A Loehnis  
 Mark Loveday  
 Julian and Judith Lockett  
 Miss S J Macdonald  
 Peter Mahrer  
 David and Mary Male  
 RM Mays-Smith  
 Colin Nears  
 Jane Nicholas



Jane Nissen  
 Paul Nix  
 Nora Kaye and Herbert Ross  
 Foundation  
 Davina Norman  
 Helen Norman  
 Jonathan MR Norman  
 Peter and Jeanie Norman  
 Kevin P O'Hare  
 Charles Palmer-Tomkinson  
 Christopher Palmer-Tomkinson  
 Dr Timothy Pascoe  
 David and Tricia Peel  
 Anthony and Ann Pilcher  
 Timothy and Sarah Pilkington  
 Jane Pleydell-Bouverie  
 Mrs JD Qualtrough  
 Selina and Gordon Rainey  
 Mrs Anne Reid  
 Carol Rentoul  
 Alfred Rodrigues Fund  
 Mr and Mrs Gerald Ronson  
 Mr and Mrs A Russell  
 Anthony Russell-Roberts  
 Mr and Mrs M Sacher  
 Robert Scarlett

Wendy Schmid-Eastwood  
 TW Schoff  
 Search Investments Plc  
 Sir Patrick Sergeant  
 Simon Sheffield  
 Sarah Simon  
 Kathrine Sorley Walker  
 Robert Southgate  
 Timothy Stephenson  
 MJC Stone  
 Leila and Melville Straus  
 Peter and Constance de Svastich  
 Stephen Szemerényi  
 Miss CJ Thompson  
 Mr and Mrs Anthony Thorp  
 John Townsend  
 Ravenna Tucker  
 Trevor Turner  
 Emma Verey  
 A J B Vernon  
 Roger and Jo Vickers  
 Vicki Villers  
 Pippa Warrell  
 Jeffrey and Susan Weingarten  
 Gwyneth Williams  
 Penelope Wrong



## THE ROYAL BALLET SCHOOL

46 Floral Street, Covent Garden  
London WC2E 9DA

Telephone: +44 (0)20 7836 8899 Facsimile: +44 (0)20 7845 7080  
[www.royalballschool.co.uk](http://www.royalballschool.co.uk)

