



ROYAL
BALLET
SCHOOL

AFFILIATE TRAINING AND ASSESSMENT PROGRAMME

LEADING THE WAY TO A NEW
ERA FOR RECREATIONAL DANCE

CONTENTS



1	WELCOME
2	ETHOS
3	STRUCTURE
4	LEVELS
5	CONTENT
6	MEMBERSHIP
7	ASSESSMENT
8	ELIGIBILITY
9-10	SELECTION
11	APPLY

The Royal Ballet School's Affiliate Programme is a unique training and assessment system for selected teachers to deliver within their own schools. It provides students from the recommended ages of five and upwards with a progressive learning pathway, and a flexible delivery structure for teachers. Appreciating the need for students to develop their knowledge and ability in ballet more broadly than learning a set syllabus, the Affiliate Programme empowers teachers as practitioners, giving them the responsibility for guiding and assessing their own students' learning.

IS THIS PROGRAMME RIGHT FOR ME?

The programme is suitable for recreational ballet teachers with a minimum of three years' experience or graduates of The Royal Ballet School teacher training programmes. It provides teachers with a System of Training and assessment scheme suitable for a broad range of students. The programme will suit teachers who value innovation, versatility and diversity; who appreciate the need for highly-trained teachers with pedagogical study implicit in training; and who prioritise the need for a holistic dance training.





- To provide a unique training programme that values the process of learning more than the end product
- To progress and develop the standard of recreational dance teaching to provide a positive and holistic learning experience that is unrivalled throughout the world
- To provide learning that is process driven and relevant to the child of today where both teachers and students value and enjoy dance education, training and the process of learning
- To provide a training programme that promotes the core values of The Royal Ballet School.

PROGRAMME STRUCTURE

The programme consists of six training levels. Within Levels 4-6, there are two routes available. The first is for those who wish to study ballet as a recreational activity. For those considering a career in the dance industry the second path provides students with an enhanced route. Each level has recommended age groups and associated guided learning hours. Guided learning hours include the minimum recommended hours for training and the maximum recommended hours for assessment preparation.

The programme is based on providing high quality training and not on student examination. Teachers are provided with a System of Training that outlines what ballet vocabulary and associated activities should be taught at each level as well as relevant pedagogy. Student progress is benchmarked through assessment material devised by their teachers, not a pre-set syllabus, and is moderated through video submission to The Royal Ballet School against specific criteria and guidelines.

PROGRAMME CONTENT

Programme content is based on The Royal Ballet School's Model for Optimal Dance Training. Each level will contain both movement and contextual studies to provide a holistic approach to training. Movement studies will include areas such as foundation movement skills, generic movement skills, qualitative movement skills and ballet technique and vocabulary. Contextual studies will include the study of repertoire, choreography, creative tasks, and art form appreciation.

IDEAL STUDENT OUTCOMES

Students who participate in the programme should expect to gain:

- A love, passion and knowledge of the art form as a whole
- Enjoyment of the learning process
- A solid technical foundation in balletic and generic movement skills
- A high-quality movement ability and proficient coordination
- A musical sensitivity
- A heightened performance quality
- The ability to be creative, spontaneous and willing to take risks
- Social confidence through the ability to work autonomously and within a group
- A positive and resilient approach to learning through a growth mindset
- Higher level thinking skills.

OVERVIEW OF TRAINING LEVELS

Each Level will have four areas of study:

- Movement (foundation skills)
- Vocabulary (including *enchaînements* devised by Affiliate teachers)
- Creative tasks
- Repertoire.

As students progress through the levels, so the performance, composition and appreciation expectations increase. All information regarding the content, pedagogy and methodology will be provided to Affiliate teachers within training sessions.



TRAINING LEVELS

LEVELS	RECOMMENDED AGES	ENHANCED LEVELS
Level 1	Age 5+	
Level 2	Age 7+	
Level 3	Age 9+	
Level 4	Age 11+	Level 4 Enhanced Levels
Level 5	Age 13+	Level 5 Enhanced Levels
Level 6	Age 15+	Level 6 Enhanced Levels

*There are no upper age limits for all ATAP levels.

LEVELS 1-3

Successful candidates will begin their training with an introductory webinar to provide practical and operational information. This is followed by a five-day, on-site intensive training course which provides teachers with training in the programmes' content and pedagogical knowledge, as well as information and support for implementing the programme within their own school. A further five days of online training will be provided during the following academic year. The training course is delivered by Royal Ballet School staff and visiting expert lecturers.

LEVELS 4-6

Training for Levels 4-6 is optional and will be held annually. Training consists of a three-day in-person intensive training course, followed by two online webinars. A further two-day in-person intensive training course and two online webinars are available for Affiliate teachers wanting to pursue the Enhanced Levels.



YOUR TRAINING WILL COVER

- The Affiliate Training and Assessment Programme's ethos and values
- Learning outcomes
- Teaching and learning strategies
- The School's Model for Optimal Dance Training
- Holistic approach to the teaching of dance
- Movement and classical vocabulary (including *enchaînement* construction)
- Repertoire study
- Choreography and improvisation
- Healthy dancer, body conditioning and mindset
- Student assessment procedures
- Reflection and evaluation.



Three professional development sessions per year, covering topics including:

- Relevant pedagogy
- Guidance on programme content and delivery
- Assessment support
- Business advice.

Exclusive access to a bespoke Video on Demand platform and resource packages, including:

- Hundreds of ballet vocabulary training videos
- Body awareness and conditioning videos from The Royal Ballet School's healthcare team
- Creative practice examples and session notes on choreographic exploration and development
- Supporting documents including the Affiliate Programme System of Training, assessment manuals, lesson plan templates and suggested reading list
- Marketing toolkit including designed assets and guidance on marketing your business developed by The Royal Ballet School marketing team
- Affiliate merchandise shop and link to purchase Affiliate uniform
- Guidance to give to parents of Affiliate students
- Special offers for teachers, including discounts on the Intensive Courses on Demand and Primary Steps on Demand programmes.

Affiliate Enrichment Programme, including:

- Ambassador workshops in-person and online
- Creative and repertoire workshops with Royal Ballet School and Affiliate programme practitioners
- Drop in Q&A sessions with programme leaders
- Facebook forum for Affiliate teachers to connect across cohorts
- Listing on a directory of Affiliate teachers
- Royal Ballet ticket offers
- Invitations to watch Royal Ballet School events where possible.

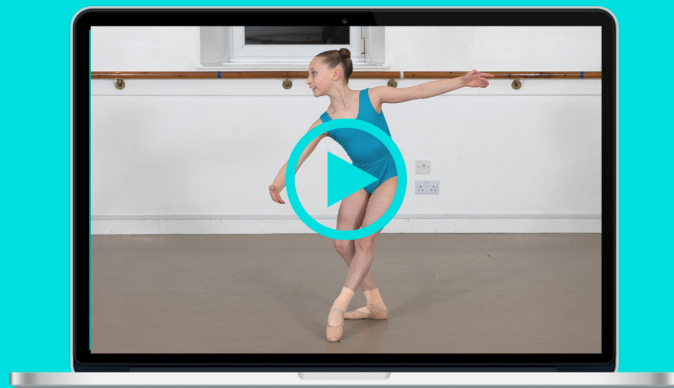
STUDENT ASSESSMENT

Students are assessed by their teacher against criteria set by The Royal Ballet School. Teachers create and teach assessment material appropriate to each level at any time throughout the year once students have completed the minimum training hours. Please note Affiliate teachers must submit a minimum of 20 students for assessment at least once every two years to maintain affiliation.

Assessments are conducted by the Affiliate teacher and video recorded within the students' dance school. They are then submitted via a secure platform to The Royal Ballet School for moderation.

This unique assessment process empowers Affiliate teachers to be part of the assessment process, promoting the responsibility and expertise of the teacher to make informed decisions about their students' progress. Teachers are given guidance with on-going monitoring and moderation of their students' assessment results. Teacher's marks are confirmed or adapted in line with the moderation process.

Acknowledging the growth in digital media, as well as the necessity to reduce carbon footprints, remote and videoed assessments are free from the constraints of examiner availability, costs and the environmental impact of travel, giving teachers control over the assessment process for their students.



MODERATION

Affiliate teachers submit their assessment to The Royal Ballet School for moderation to ensure validity, fairness and reliability. Moderation allows Affiliate teachers to develop their observation skills and understanding of performance criteria. Royal Ballet School assessors are responsible for moderation

EXAMINATIONS WITH OTHER DANCE SOCIETIES

The programme provides a way of learning for students that will enable them to do well in many situations including examinations for other organisations. Students can continue to undertake syllabi examinations with other societies alongside the Affiliate Programme.

ELIGIBILITY FOR TRAINING

To be considered for Affiliate training, applicants should have:

- A minimum of three years' experience as a ballet teacher or are a graduate of The Royal Ballet School teacher training programmes
- Demonstrated personal attributes required for ballet teaching including:



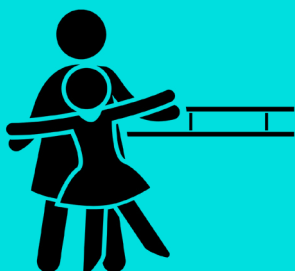
Appropriate personal presentation



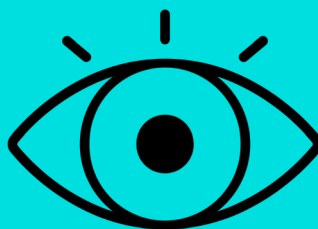
A current Disclosure and Disbarring Service (DBS) check



Organisational skills



The desire to work with young people to foster their talent for classical ballet



The ability to, or the capacity to learn to, visually recognise areas of improvement for dancers



Analytical skills in relation to ballet technique, musicality and artistry



The ability to work as part of a team



Appropriate communication skills for working with young people



Personal and professional integrity

APPLICATION STAGE

Candidates are selected from a three-stage application process. Applicants must successfully complete each stage before moving to the next.

INITIAL TRAINING

Candidates selected from Stage 3 participate in an initial mandatory training programme for Levels 1-3, one day online and five days in-person. Once completed, candidates are awarded provisional affiliate status.

**PROGRAMME IMPLEMENTATION**

Provisional Affiliate teachers implement the training programme in their school for a three month period and submit a videoed sample lesson which is assessed. Guidance and support are given to all teachers. Successful candidates are awarded affiliate status and continue with the delivery of the programme. For those who do not attain the required standard, further training is provided before repeating the provisional status and the assessment process.

FURTHER TRAINING

Teachers awarded full affiliation status are provided with four further online training on student assessment processes, moderation and standardisation to allow for the submission of student assessments. Teachers who wish to deliver Levels 4-6 and the Enhanced Levels are required to take further training for these levels.



MAINTAINING AFFILIATE STATUS

Affiliate teachers are required to submit students for assessment at least once every two years. Those that are deemed to be successfully delivering the programme will remain an Affiliate teacher. For those who do not attain the required standard, further training is required.

To maintain affiliate status teachers must:

- Pay an annual membership fee
- Submit a current DBS, safeguarding policies and relevant insurance and legal certificates annually
- Submit students for assessment at least once every two years
- Attend three days of CPD training per year provided by The Royal Ballet School.

Affiliate teachers have the option to complete an additional five days of training, three days for levels 4-6 and two days for the Enhanced Levels.

Upon acceptance, teachers will receive full terms and conditions for maintaining affiliate status.

**VIEW FULL AFFILIATE TEACHER APPLICATION
AND ASSESSMENT PROCESS**



HOW TO APPLY

STAGE 1: APPLICATION FORM

STAGE 2: VIDEO EVIDENCE

STAGE 3: INTERVIEW

AFFILIATE TEACHER PROGRAMME COSTS

For information on all costs please see our [website](#).

CONTACT

Register your interest to be the first to know about ATAP opportunities. If you have any queries, please see our [website](#) or contact us:

teachertraining@royalballetschool.org.uk

+44 (0)20 7836 8899

The Royal Ballet School
46 Floral Street
Covent Garden
London
WC2E 9DA